

**ADDENDUM NO. 1**

John A. Tuten & Associates, Architects  
4680 Hwy 17 North  
Brunswick, GA 31525

---

**PROJECT MANUAL**

**1. REQUEST FOR PROPOSALS**

- A. The bid date is changed to **2:30 PM on April 1, 2019** at Brantley County Board of Education.
- B. On Page RFP-3, Item 3. – “Substantial completion is to be achieved on/or before **August 9, 2019.**”

**2. PROPOSAL FORM**

- A. On Page PF-2, under Attachment #3 should read – “Demonstrated Ability to Meet Project Schedule with detailed Bar Chart Project Construction Schedule based on **Notice to Proceed on or before April 16, 2019** and substantial completion of **August 9, 2019.**
- B. On Page PF-10, Attachment #3 should read – “..... Substantial completion is to be achieved on/or before **August 9, 2019,** based on a Notice to Proceed on/or before **April 16, 2019 with work on site commencing Saturday, May 25, 2019.**”

**3. INDEX OF DRAWINGS**

- A. Discard issued “Index of Drawings” and replace with attached “Index of Drawings” dated 3/06/19.

**DRAWINGS**

**1. SHEET A103 – DETAILS**

- A. Discard issued “Sheet A103” and replace with attached “Sheet A103” dated 3/06/19.

**END OF ADDENDUM NO. 1**

**Attachments:**

Index of Drawings  
Sheet A103

1816\160\190306AddendumNo1

**BRANTLEY COUNTY SCHOOLS  
HOBOKEN BUILDING 2060 & NAHUNTA BUILDINGS 2040, 2050 & 2060  
ELEMENTARY SCHOOLS RE-ROOFING**

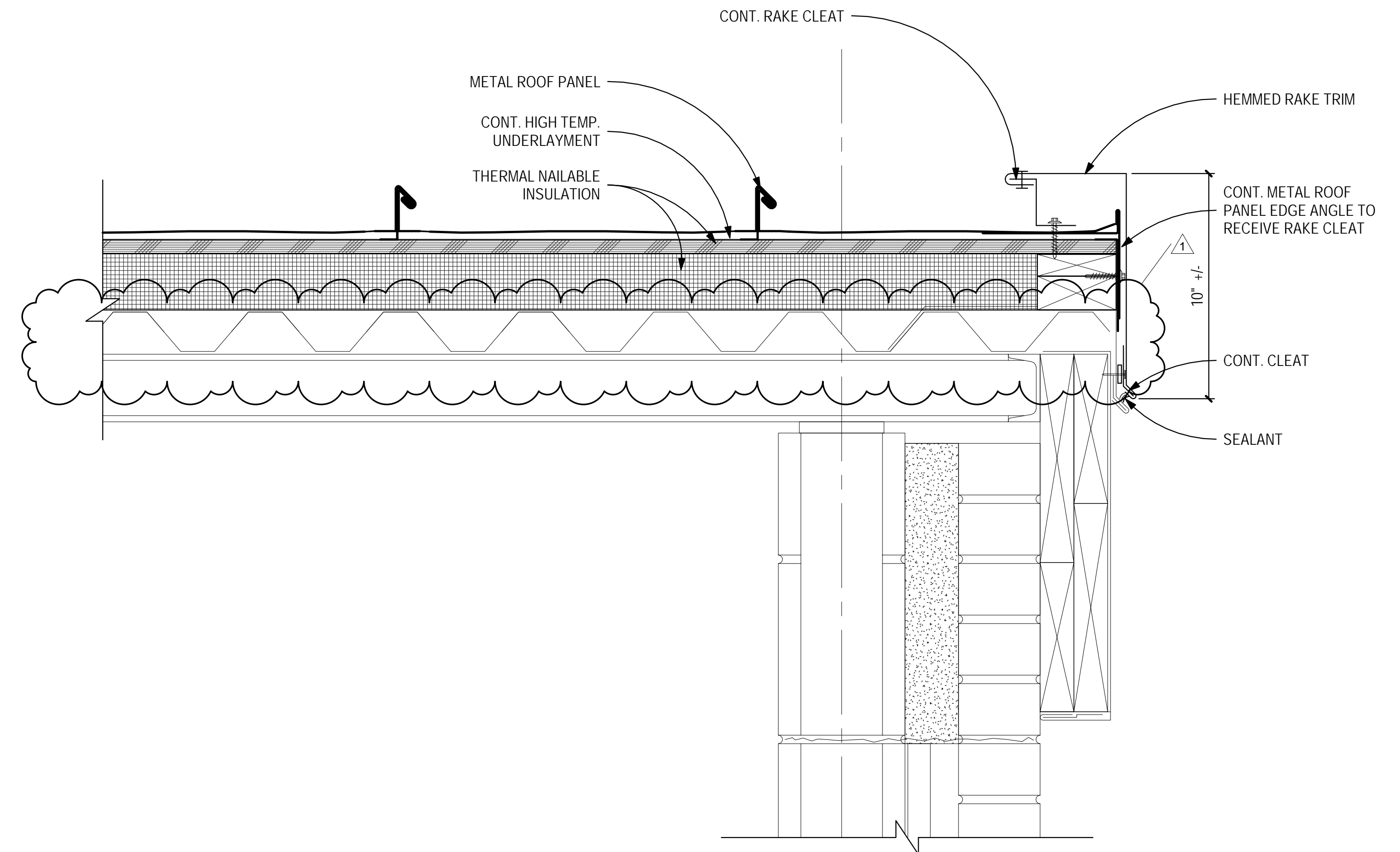
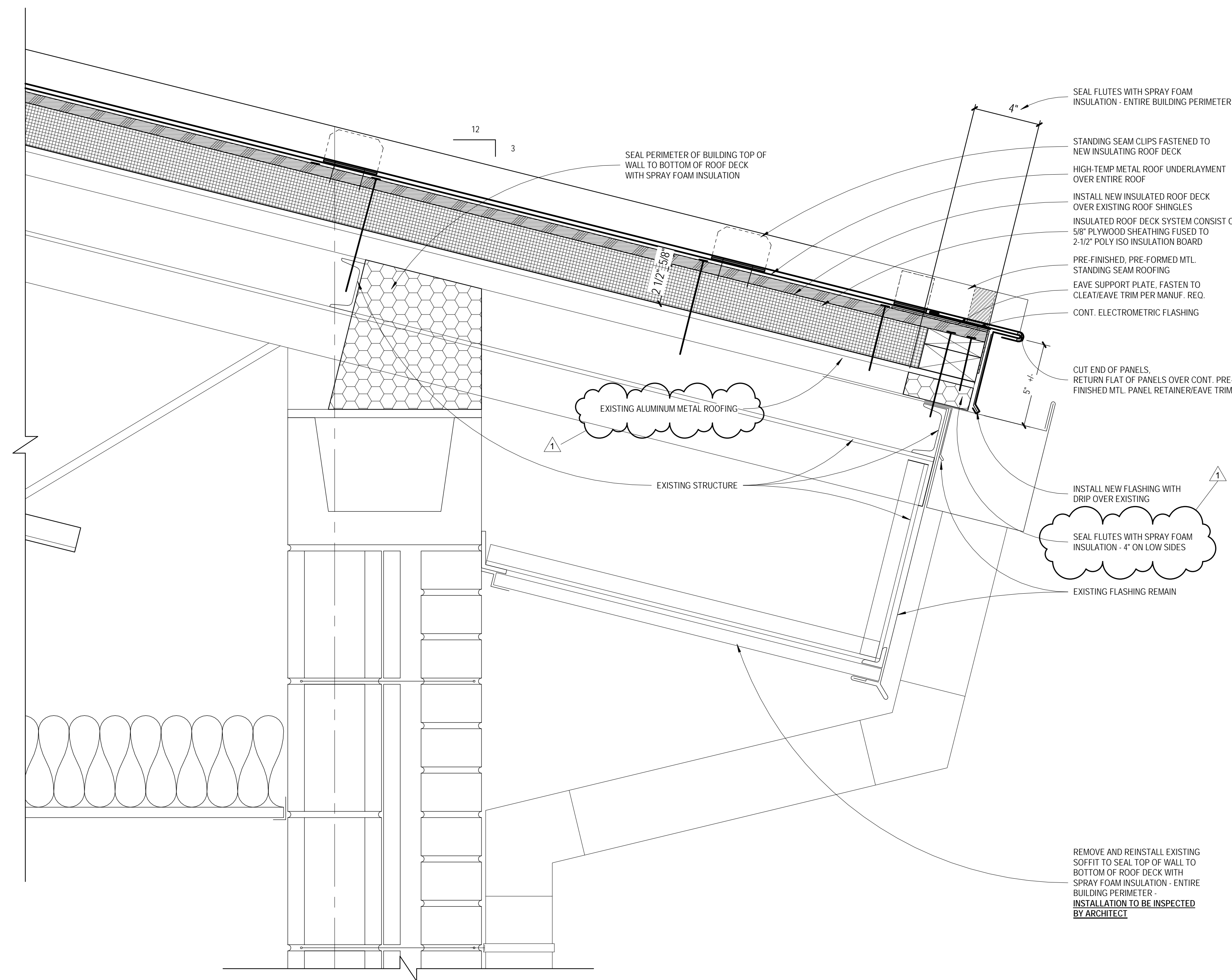
**ADDENDUM NO. 1  
MARCH 6, 2019**

**INDEX OF DRAWINGS**

A0.0	COVER SHEET / INDEX	
A101	HOBOKEN ELEMENTARY SCHOOL BUILDING 2060, FLOOR & ROOF PLAN	
A102	NAHUNTA ELEMENTARY SCHOOL BUILDING 2040, 2050, & 2060, FLOOR & ROOF PLANS	
A103	DETAILS	<b>ADDENDUM NO. 1</b>

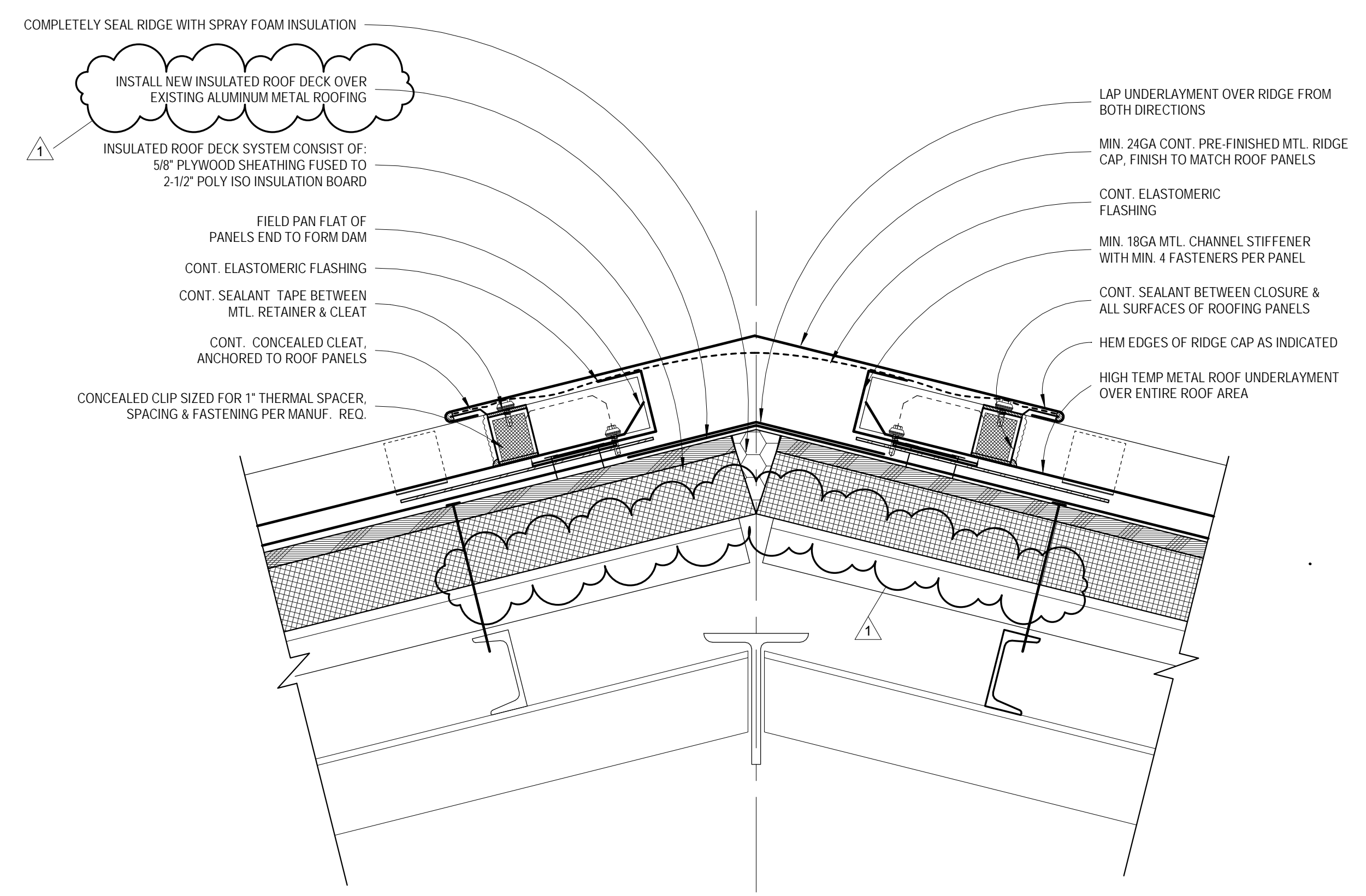
**END OF INDEX OF DRAWINGS**

NO	REVISION / SUBMISSIONS	DATE
1	Addendum #1	03/06/19

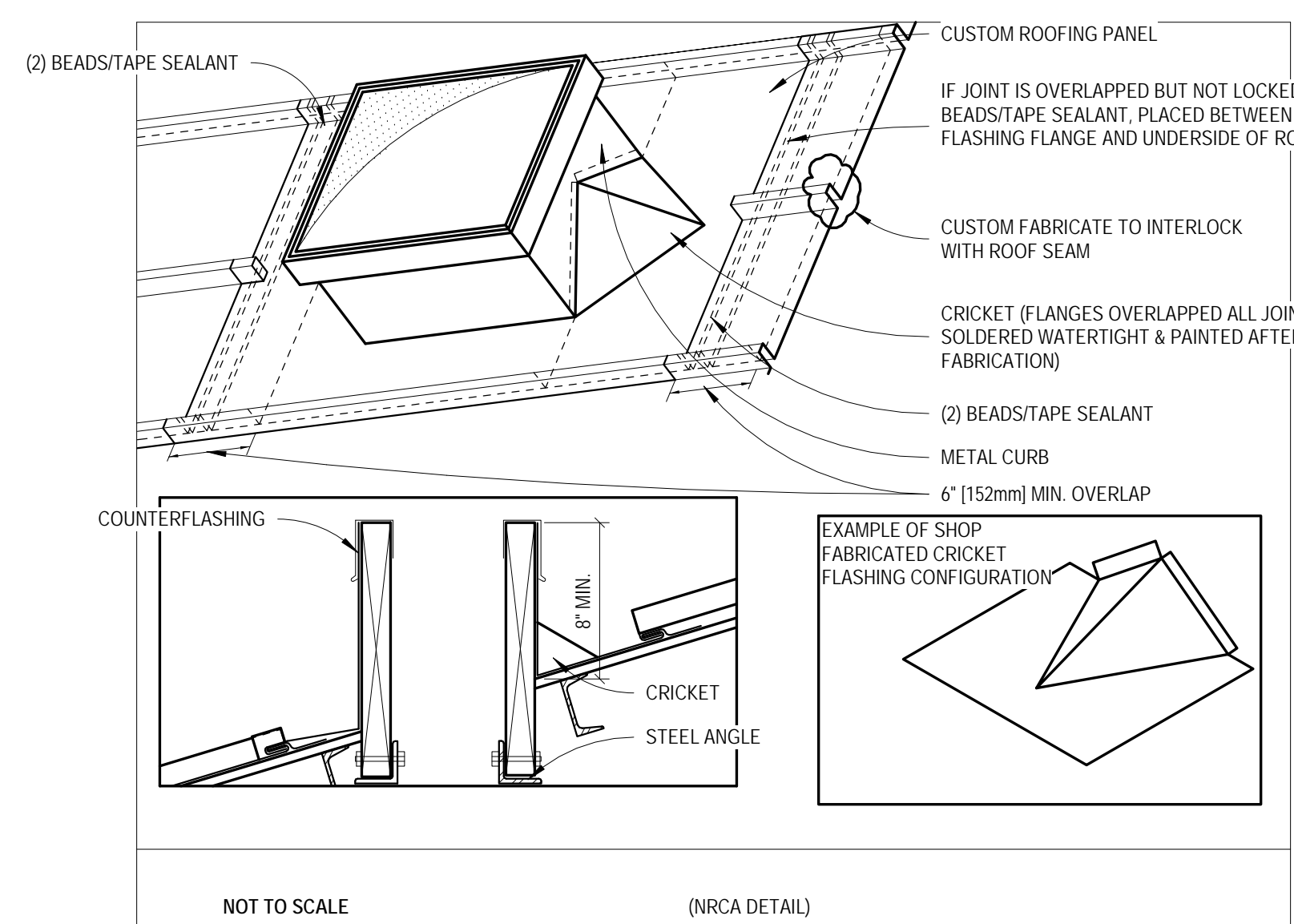


**1 TYPICAL - ROOF EDGE**  
SCALE: 3" = 1'-0"

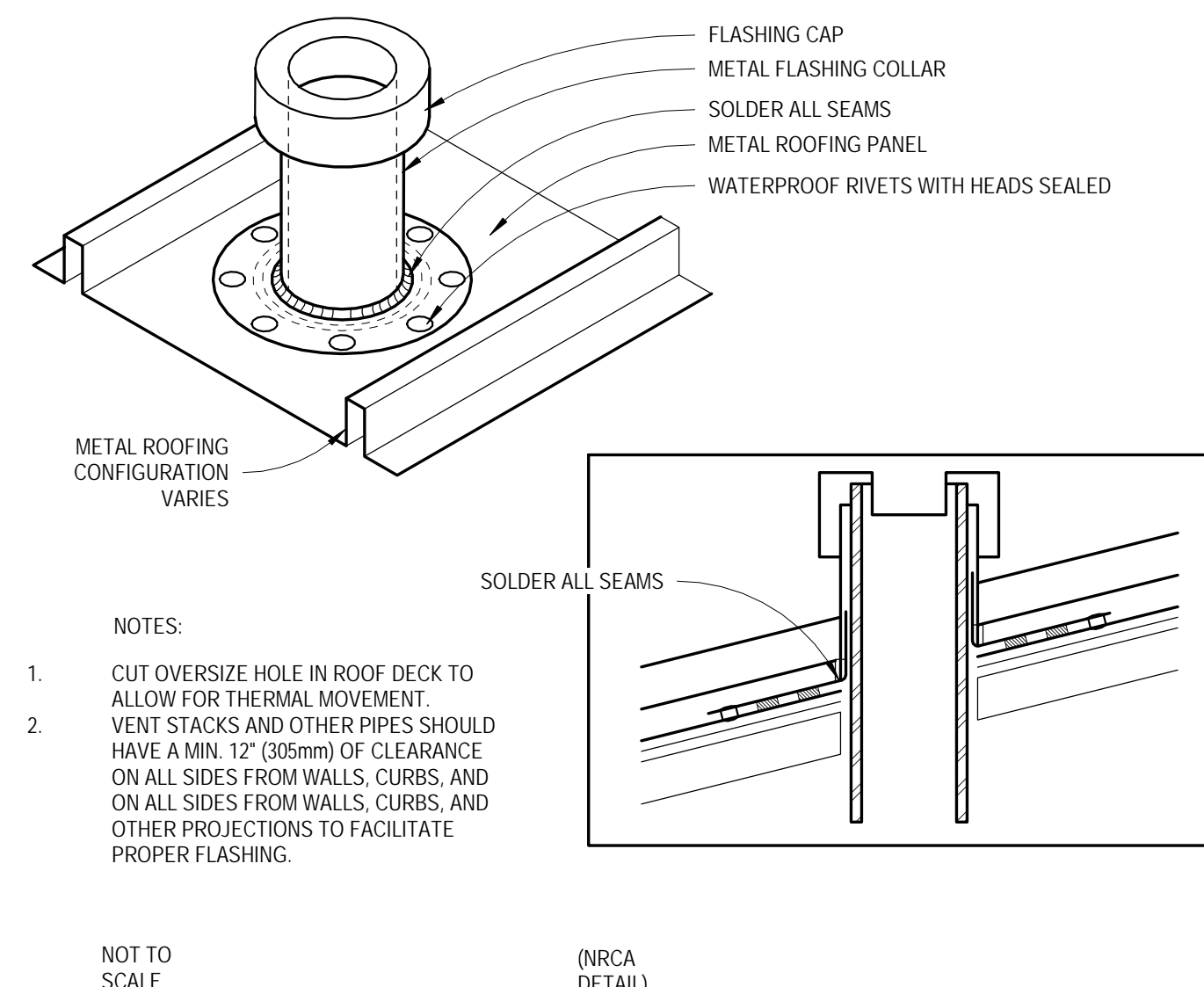
**2 TYPICAL SIDEWALL**  
SCALE: 3" = 1'-0"



**3 TYPICAL RIDGE DETAIL**  
SCALE: 3" = 1'-0"



**4 METAL ROOF @ EQUIPMENT CURBS**  
SCALE: 1 1/2" = 1'-0"



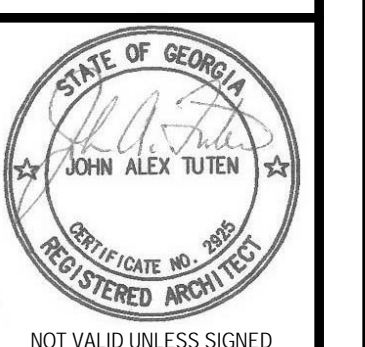
**5 VENT STACK AT METAL ROOF**  
SCALE: 1 1/2" = 1'-0"

JOHN A. TUTEN & ASSOCIATES  
ARCHITECTS  
4680 U.S. HIGHWAY 17 NORTH  
BRUNSWICK, GEORGIA 31525  
www.jatuten.com

BRANTLEY COUNTY SCHOOLS,  
HOBOKEN BUILDING 2060 & NAHUNTA  
BUILDINGS 2040, 2050 & 2060  
ELEMENTARY SCHOOLS RE-ROOF  
272 School Circle, Nahunta, GA 31553

CAPITAL OUTLAY  
PROJECT #  
SCHOOL CODE:  
FTE:

DETAILS



ISSUED FOR:  
BID SET

DRAWN BY  
CHECKED BY  
APPROVED BY  
02/28/19  
PROJECT DATE  
1816  
PROJECT NUMBER

SHEET NUMBER:  
**A103**

Copyright (c) 2019  
All Rights Reserved.

3/6/2019 9:50:51 AM F:\181816 Brantley Co. Nahunta & Hoboken Elementary Re-Roof\142 Production\1816-0-Hoboken Nahunta re-roof.rvt