

**GLYNN ACADEMY HIGH SCHOOL
CAFETERIA BUILDING (5017) RENOVATION**

ADDENDUM NO. 2

John A. Tuten & Associates, Inc.
4680 Hwy 17 North
Brunswick, GA 31525

DATE: November 28, 2017

PROJECT MANUAL

1. INDEX OF DRAWINGS

- A. Discard issued “Index of Drawings” and replace with attached “Index of Drawings” dated 11/28/17.

DRAWINGS

1. SHEET E1.1 – LIGHTING AND POWER PLAN

- A. Discard issued “Sheet E1.1” and replace with attached “Sheet E1.1” dated 11/16/17.

2. SHEET P1.0 – MECHANICAL LEGEND AND SCHEDULES

- A. Discard issued “Sheet P1.0” and replace with attached “Sheet P1.0” dated 11/16/17.

3. SHEET P2.0 – MECHANICAL PLAN

- A. Discard issued “Sheet P2.0” and replace with attached “Sheet P2.0” dated 11/16/17.

END OF ADDENDUM NO. 2

Attachments:

Index of Drawings
Sheet E1.1
Sheet P1.0
Sheet P2.0

1705\160\171128AddendumNo2

INDEX OF DRAWINGS

A0.0 COVER SHEET

ARCHITECTURAL DRAWINGS

A1.0 ARCHITECTURAL SITE PLAN
A2.0 EXISTING CONDITIONS & DEMOLITION PLANS
A2.1 RENOVATION PLAN(S) & LIFE SAFETY PLAN
A2.2 REFERENCE SHEET – A114 R.E.C.A. (Project No. 0713)
A3.0 DOOR & ROOM FINISH SCHEDULES – DETAILS
A4.0 EXTERIOR ELEVATIONS & BUILDING SECTIONS
A5.0 CONSTRUCTION DETAILS

ADDENDUM NO. 1

ADDENDUM NO. 1

ELECTRICAL

E0.1 ELECTRICAL LEGEND
E0.2 ELECTRICAL DEMOLITION PLAN
E1.1 LIGHTING AND POWER PLAN
E1.2 FIRE ALARM AND CABLE MANAGEMENT PLAN

ADDENDUM NO. 2

MECHANICAL

M0.1 MECHANICAL LEGEND AND SCHEDULES
M1.1 MECHANICAL PLAN

PLUMBING

P1.0 MECHANICAL LEGEND AND SCHEDULES
P2.0 MECHANICAL PLAN

ADDENDUM NO. 2

ADDENDUM NO. 2

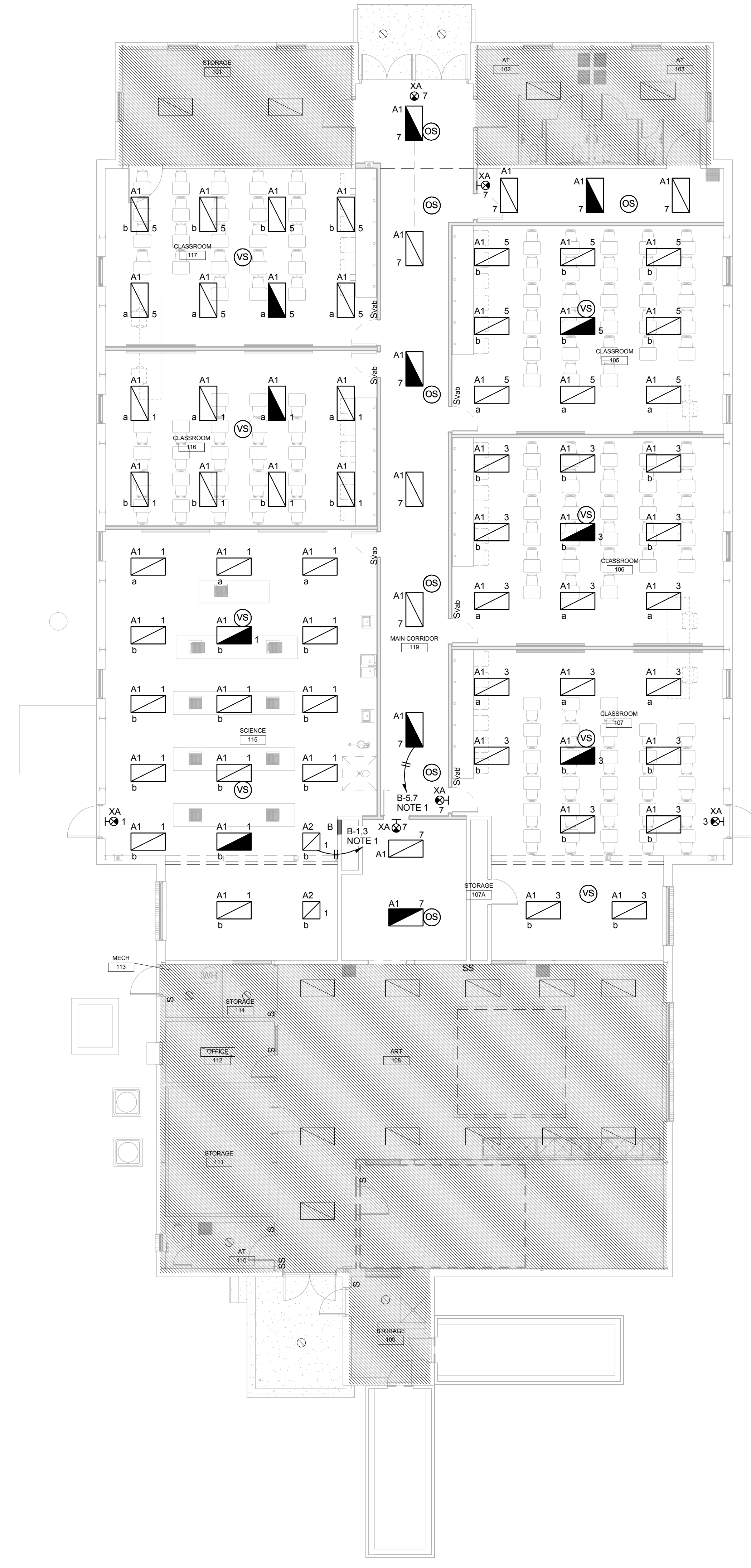
END OF INDEX OF DRAWINGS

NOTES

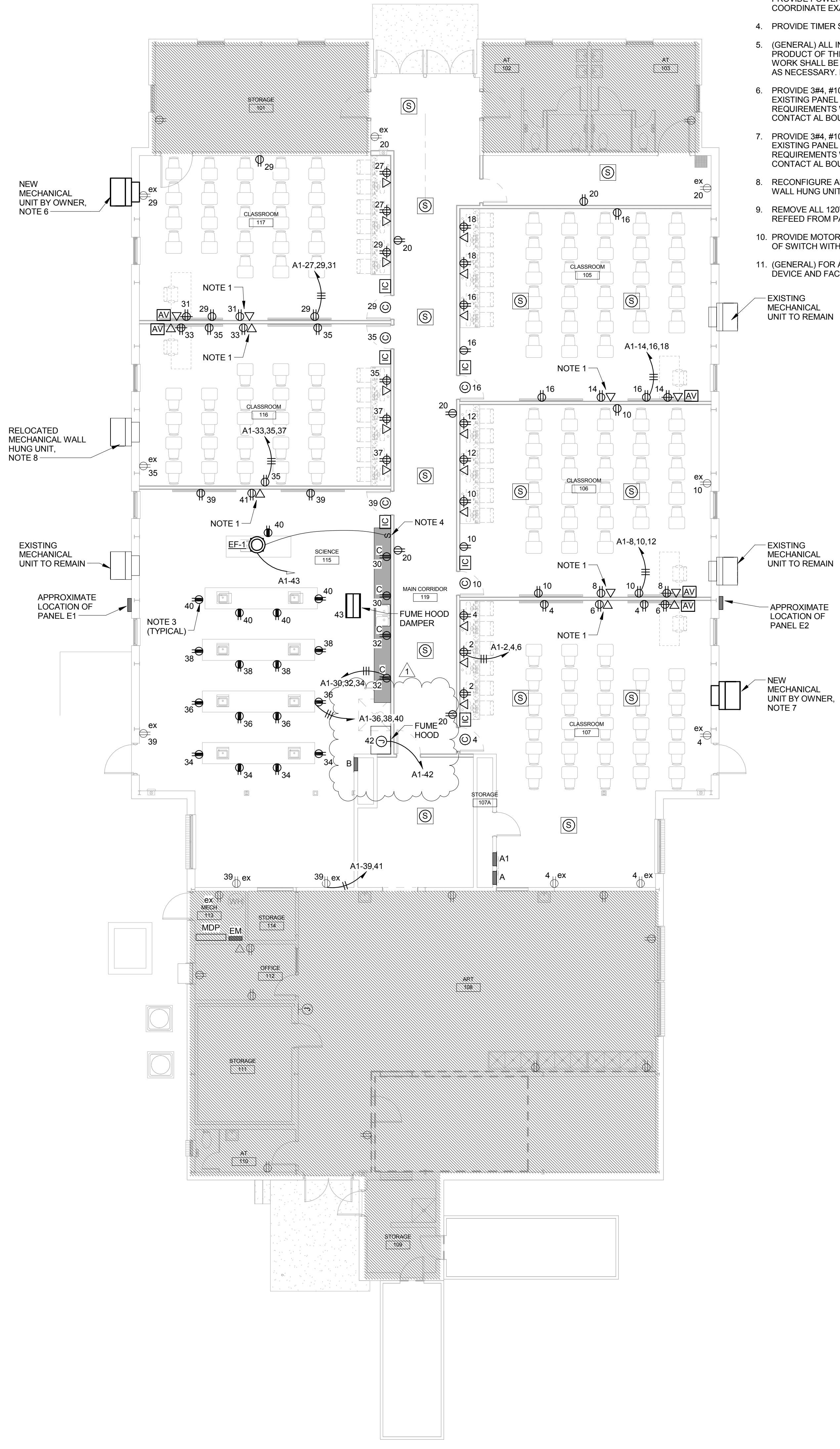
- FOR INTERACTIVE FLAT PANEL DISPLAY, PROVIDE 1-1/4" FROM DATA BOX TO ABOVE ACCESSIBLE CEILING. COORDINATE MOUNTING HEIGHT WITH OWNER'S REPRESENTATIVE PRIOR TO ROUGH-IN.
- (GENERAL) HATCHED AREAS TO REMAIN AS IS.
- ALL GFCI DUPLEX RECEPTACLES IN RELOCATED FURNITURE ARE EXISTING. PROVIDE POWER STUBBED UP INTO FURNITURE FOR EXISTING RECEPTACLES. COORDINATE EXACT LOCATION OF STUB UP WITH OWNER PRIOR TO ROUGH-IN.
- PROVIDE TIMER SWITCH FOR EF-1. SWITCH SHALL HAVE A 10 MINUTE RUN TIMER.
- (GENERAL) ALL INTERCOM SYSTEM DEVICES SHALL MATCH EXISTING AND BE THE PRODUCT OF THE EXISTING INTERCOM CAMPUS SYSTEM MANUFACTURER. ALL WORK SHALL BE PERFORMED BY THE ORIGINAL SYSTEM INSTALLER. REPROGRAM AS NECESSARY. PROVIDE SUBMITTAL DATA FOR ALL MATERIALS TO BE INSTALLED. CONTACT AL BOUDREAUX FOR MORE INFORMATION.
- PROVIDE 3#4, #10G, 1-1/4" FROM EXISTING PANEL E1. PROVIDE 60A/3P BREAKER IN EXISTING PANEL E1 FOR NEW WALL HUNG UNIT. COORDINATE EXACT ELECTRICAL REQUIREMENTS WITH OWNER FURNISHED EQUIPMENT PRIOR TO ROUGH-IN. CONTACT AL BOUDREAUX FOR MORE INFORMATION.
- PROVIDE 3#4, #10G, 1-1/4" FROM EXISTING PANEL E2. PROVIDE 60A/3P BREAKER IN EXISTING PANEL E2 FOR NEW WALL HUNG UNIT. COORDINATE EXACT ELECTRICAL REQUIREMENTS WITH OWNER FURNISHED EQUIPMENT PRIOR TO ROUGH-IN. CONTACT AL BOUDREAUX FOR MORE INFORMATION.
- RECONFIGURE AND EXTEND EXISTING BRANCH CIRCUIT TO SERVE RELOCATED WALL HUNG UNIT AT NEW LOCATION.
- REMOVE ALL 120V CIRCUITS (APPROXIMATELY 15) FROM PANELS E1 AND E2 AND REFEED FROM PANEL A WITH A NEUTRAL.
- PROVIDE MOTOR RATED SWITCH FOR FUME HOOD. COORDINATE EXACT LOCATION OF SWITCH WITH FUME HOOD INSTALLER.
- (GENERAL) FOR ALL RECEPTACLES NOTED AS EXISTING, PROVIDE NEW WIRING DEVICE AND FACEPLATES.

NOTES

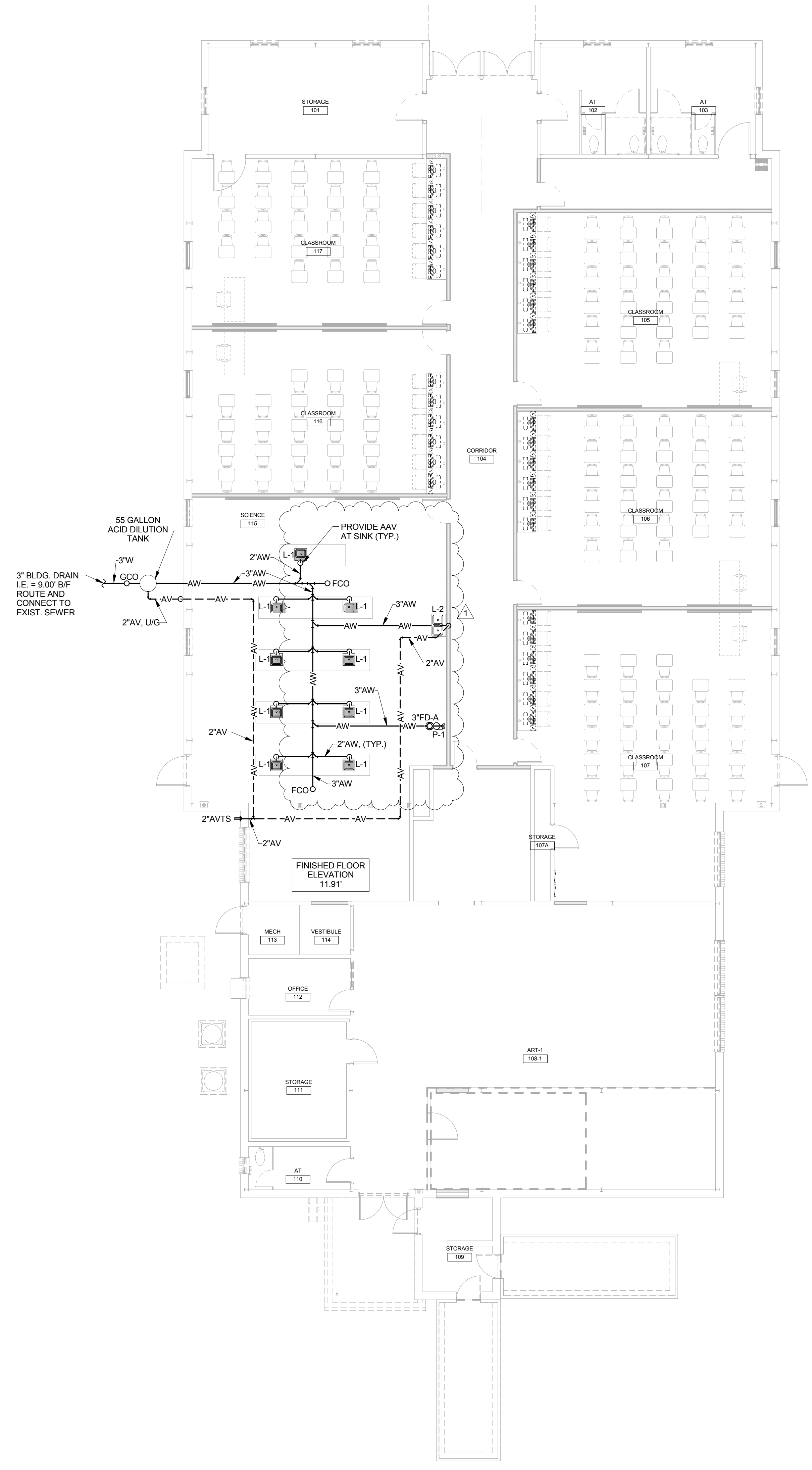
- REUSE EXISTING CIRCUITS FEEDING DINING ROOM LIGHTS. RECONFIGURE EXISTING CIRCUITS TO ACHIEVE SWITCHING AS SHOWN.
- (GENERAL) HATCHED AREAS TO REMAIN AS IS.



1 LIGHTING PLAN
 E1.1 SCALE: 1/8" = 1'-0"



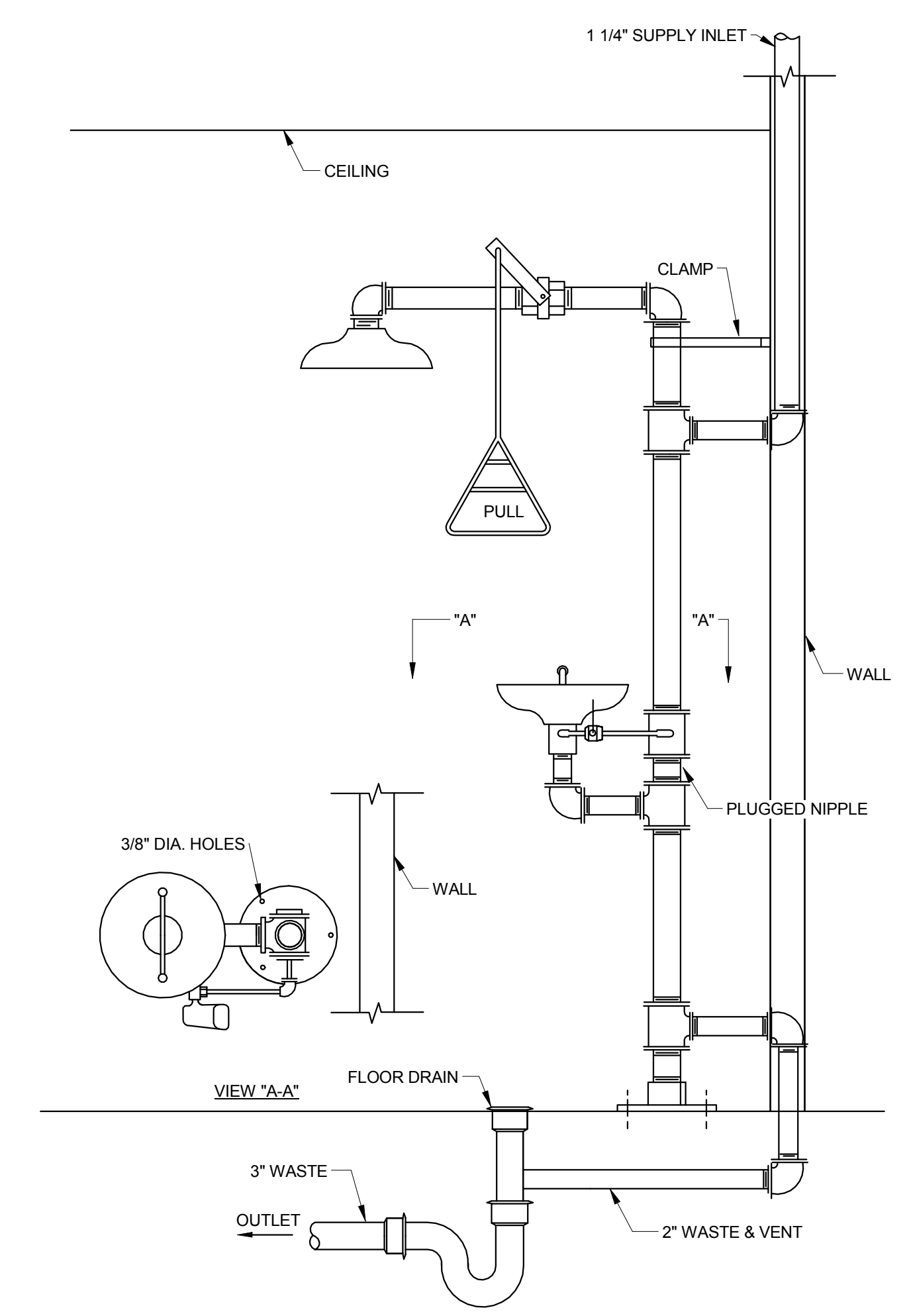
2 POWER PLAN
 E1.1 SCALE: 1/8" = 1'-0"



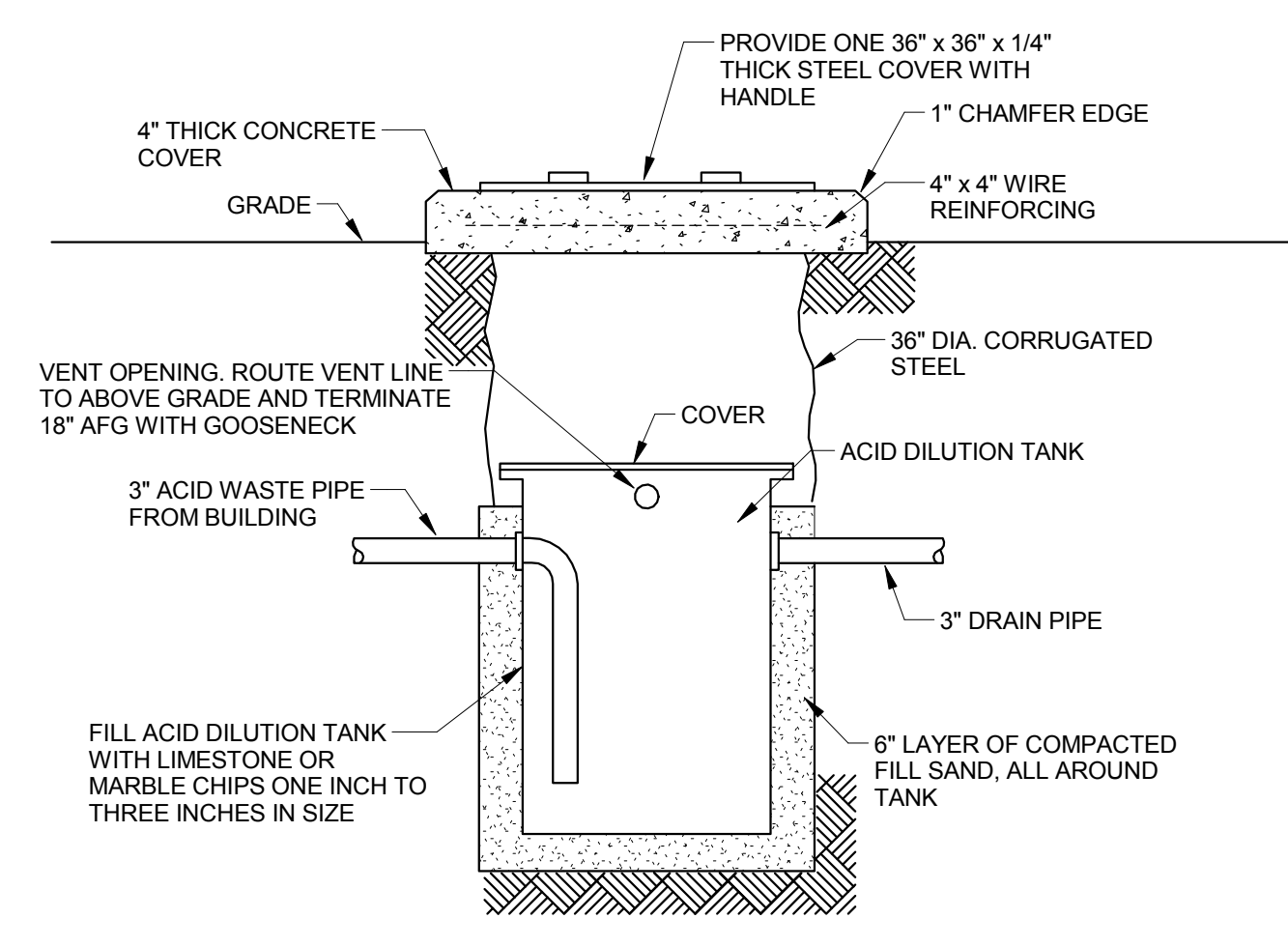
1 DRAINAGE & VENT PLAN
 P1.0 SCALE: 1/8" = 1'-0"

PLUMBING FIXTURE SCHEDULE

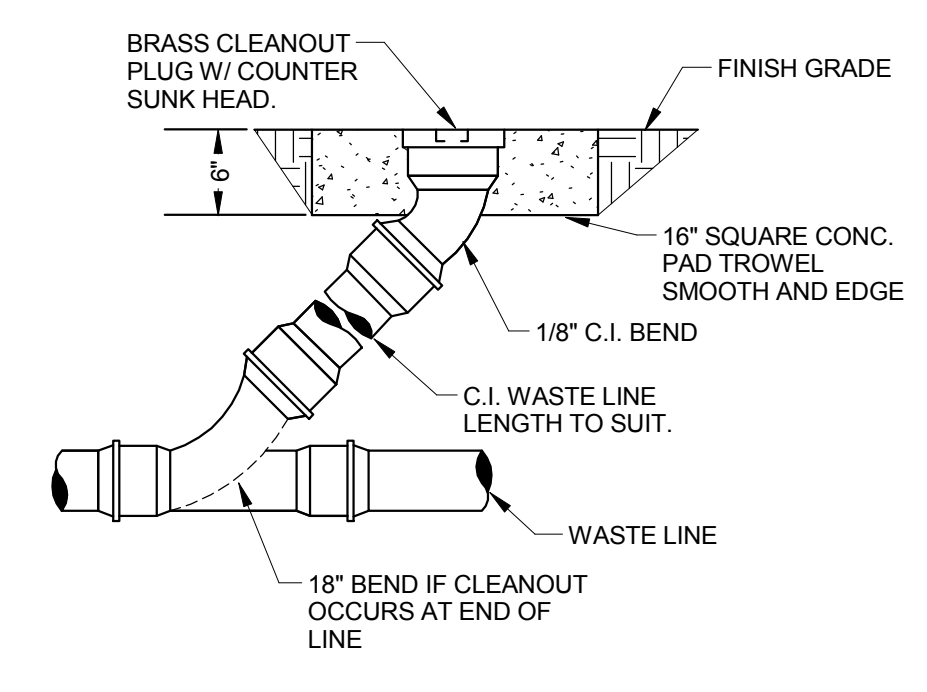
ITEM	DESCRIPTION	MINIMUM CONNECTION SIZE (INCHES)				MOUNTING HEIGHT REMARKS (ABOVE FLOOR)
		HOT WATER	COLD WATER	WASTE	VENT	
L-2	LAB SINK - H.C.	1/2"	1/2"	1-1/2"	1-1/2"	COUNTERTOP
P-1	EMERGENCY SHOWER/EYEWASH	---	1-1/4"	3" FD	1-1/2"	FLOOR MTD.
L-1	LAB SINK	1/2"	1/2"	1-1/2"	1-1/2"	PROVIDED WITH CASEWORK



2 EMERGENCY SHOWER / EYEWASH
 P1.0 NOT TO SCALE



3 ACID DILUTION TANK DETAIL
 P1.0 NOT TO SCALE



4 CLEANOUT TO GRADE DETAIL
 P1.0 NOT TO SCALE

PLUMBING LEGEND

ABBREVIATION	SYMBOL	DESCRIPTION
HWR	---	HOT WATER RETURN PIPING
H	---	HOT WATER PIPING
T	---	TEMPERED HOT WATER PIPING
C	---	COLD WATER PIPING
G	---	GAS PIPING
ST	---	STORM DRAIN PIPING (ABOVE GROUND)
ST	---	STORM DRAIN PIPING (BELOW GROUND)
OF	---	OVERFLOW DRAIN PIPING
CA	---	COMPRESSED AIR PIPING
S.W	---	SOIL AND WASTE PIPING
V	---	VENT PIPING
	[Symbol]	SOLENOID VALVE
	[Symbol]	SHUT-OFF VALVE
	[Symbol]	SWING CHECK VALVE
	[Symbol]	FLOW CONTROL
	[Symbol]	CONNECT TO EXISTING
HBE	[Symbol]	HOSE BIBB (WALL BOX) FREEZE PROOF
HB/B	[Symbol]	HOSE BIBB (WALL BOX) NON-FREEZE PROOF
HBR	[Symbol]	ROOF HYDRANT NON-FREEZE PROOF
HBI	[Symbol]	HOSE BIBB (INTERIOR)
WCO	[Symbol]	WALL CLEAN OUT
RD -'	[Symbol]	ROOF DRAIN - TYPE
FCO	[Symbol]	FLOOR CLEAN OUT
GCO	[Symbol]	GRADE CLEAN OUT
FD -'	[Symbol]	FLOOR DRAIN - TYPE
HA -'	[Symbol]	WATER HAMMER ARRESTOR - SIZE
DSN	[Symbol]	DOWNSPOUT NOZZLE
VTR	[Symbol]	VENT THRU ROOF
VTS	[Symbol]	VENT THRU SIDEWALL
AFF	[Symbol]	ABOVE FINISH FLOOR
AFG	[Symbol]	ABOVE FINISH GRADE
AC	[Symbol]	ABOVE CEILING
B/F	[Symbol]	BELOW FLOOR
GPM	[Symbol]	GALLONS PER MINUTE
PSI	[Symbol]	POUNDS PER SQUARE INCH
U/G	[Symbol]	UNDER GROUND
TYP.	[Symbol]	TYPICAL
T-P	[Symbol]	TRAP PRIMER
H.C.	[Symbol]	HANDICAP ACCESSIBLE
GPH	[Symbol]	GALLONS PER HOUR
CONN.	[Symbol]	CONNECTION
ARCH.	[Symbol]	ARCHITECTURAL
PRESS.	[Symbol]	PRESSURE
W.C.	[Symbol]	WATER COLUMN
DWGS.	[Symbol]	DRAWINGS

- PLUMBING NOTES:**
- ALL SITE UTILITIES ARE SHOWN IN APPROXIMATE LOCATIONS ONLY. VERIFY EXACT LOCATION AND INVERT ELEVATION IN FIELD BEFORE BEGINNING WORK.
 - ALL SUSPENDED PIPING SHALL BE SUPPORTED FROM FLOOR AND/OR ROOF STRUCTURAL MEMBERS. IN NO CASE SHALL PIPING BE SUSPENDED FROM FLOOR OR ROOF DECK LESS THAN 4" THICK CONCRETE.
 - FIRE STOP ALL PENETRATIONS OF FIRE RATED ASSEMBLIES. REFER TO ARCHITECTURAL DRAWINGS FOR ASSEMBLY RATINGS.
 - PIPING INSTALLED IN PLENUM SPACES SHALL MEET ASTM E-84/ASTM E-136 AND UL 723 STANDARDS FOR FLAME SPREAD AND SMOKE GENERATION. COORDINATE PLENUM LOCATIONS WITH MECHANICAL CONTRACTOR.
 - COORDINATE ALL WORK WITH OTHER TRADES.
 - PROVIDE INLINE TRAP SEAL DEVICES ON ALL FLOOR DRAINS NOT PROVIDED WITH TRAP PRIMERS.
 - PROVIDE DRAIN VALVES AT ALL LOW POINTS IN ALL WATER PIPING SYSTEMS.
 - PIPING FROM TRAP PRIMERS TO DRAINS INSTALLED BELOW FLOOR SLAB SHALL BE TYPE L SOFT COPPER TUBING WITH NO JOINTS BELOW THE SLAB.
 - ALL WATER, VENT AND GAS PIPING SHALL BE INSTALLED ABOVE THE FLOOR UNLESS NOTED OTHERWISE.
 - ALL SOIL, WASTE, AND STORM PIPING SHALL BE INSTALLED BELOW THE FLOOR UNLESS NOTED OTHERWISE.
 - PROVIDE CLEANOUTS AT THE BASE OF ALL SOIL, WASTE, VENT, AND STORM RISER OVER ONE STORY IN HEIGHT. ALL WALL CLEANOUTS SHALL BE INSTALLED AT 18" ABOVE FINISHED FLOOR.
 - WALL HYDRANTS SHALL BE MOUNTED 1' - 6" ABOVE FINISHED GRADE.
 - HOSE BIBBS SHALL BE MOUNTED 1' - 6" ABOVE FINISHED FLOOR.
 - LOCATE ALL DRAINAGE PIPING AND CLEANOUTS CENTERED IN CORRIDORS UNLESS NOTED OTHERWISE. COORDINATE THE LOCATIONS OF CLEANOUTS WITH FLOOR PATTERN. ALL CLEANOUTS AT THE EXIT OF CORRIDORS SHALL BE TWO-WAY CLEANOUTS.
 - PIPE DRAIN AND HOT WATER SUPPLY TO UNDERCOUNTER DISHWASHERS FROM ADJACENT SINK.
 - ALL VENT TERMINALS SHALL BE LOCATED A MINIMUM OF 10 FEET FROM ANY DOOR, OPERABLE WINDOW, OR FRESH AIR INTAKE.

JOHN A. TUTEN & ASSOCIATES ARCHITECTS
 A DIVISION OF JAMES W. BRUCKLEY AND ASSOCIATES INC.
 ARCHITECTS
 1001 MANSFIELD STREET
 BRUNSWICK, GEORGIA 31520
 www.jatuten.com

GLYNN ACADEMY HIGH SCHOOL CAFETERIA BUILDING (5017) RENOVATION
 1001 MANSFIELD STREET
 BRUNSWICK GEORGIA 31520
 GLYNN COUNTY BOARD OF EDUCATION

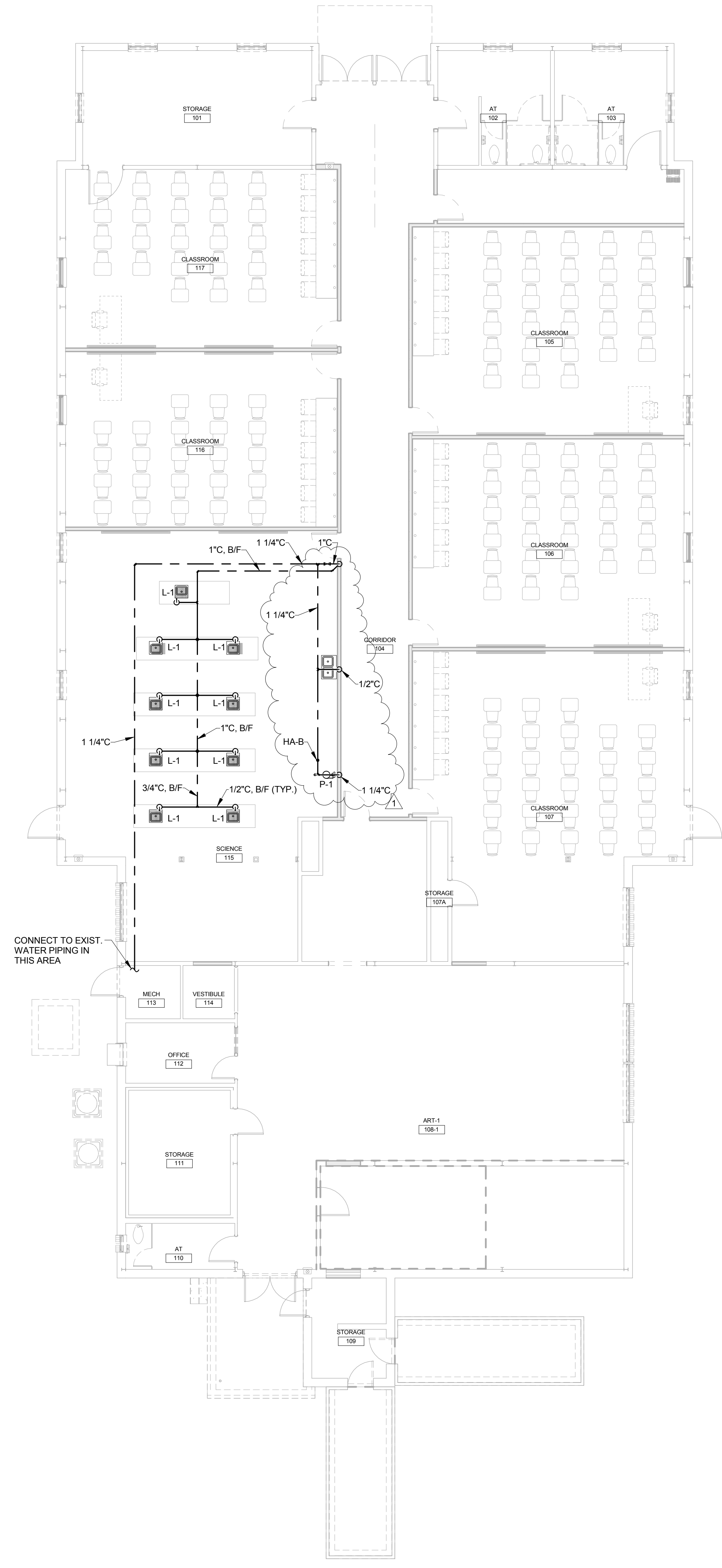
CAPITAL OUTLAY PROJECT #18D
 SYSTEM CODE: 663
 SCHOOL CODE: 4752
 FTE: 1793

DRAINAGE & VENT PLAN

NOT VALID UNLESS SIGNED
ISSUED FOR:
 BIDDING

JGB
 DRAWN BY
 REL
 CHECKED BY
 REL
 APPROVED BY
 10/27/17
 PROJECT DATE
 1705
 PROJECT NUMBER

SHEET NUMBER:
P1.0
 Copyright (c) 2017
 All Rights Reserved.



CONNECT TO EXIST. WATER PIPING IN THIS AREA

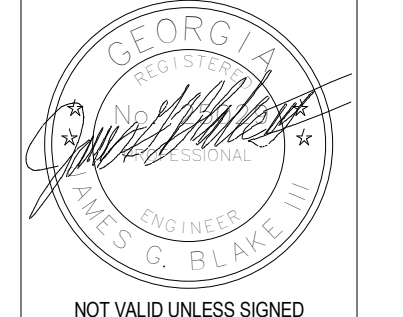
HAMMER ARRESTOR SCHEDULE		
ITEM	PDI UNIT	FIXTURE UNIT
HA	A	1-11
HA	B	12-32
HA	C	33-60
HA	D	61-113
HA	E	114-154

1 WATER SERVICE PLAN
 SCALE: 1/8" = 1'-0"

**GLYNN ACADEMY HIGH SCHOOL
 CAFETERIA BUILDING (5017) RENOVATION
 1001 MANSFIELD STREET
 BRUNSWICK GEORGIA 31520
 GLYNN COUNTY BOARD OF EDUCATION**

CAPITAL OUTLAY
 PROJECT #TRD
 SYSTEM CODE: 663
 SCHOOL CODE: 4752
 FTE: 1793

WARNING: Contractors, subcontractors, vendors and suppliers are advised that the contract documents consist of Architect's reproduced printed, bound and numbered specifications, Architect's reproduced printed, bound and numbered blue- or black-line print standards, project schedule, and all other contract documents. Documents reproduced herein are for informational purposes only. Documents reproduced herein are not to be used for construction or other purposes without the express written consent of the Architect. The Architect, subcontractors, vendors and suppliers are solely responsible for verification that documents reproduced herein are accurate and complete. The Architect, subcontractors, vendors and suppliers are solely responsible for verification that documents reproduced herein are accurate and complete. The Architect, subcontractors, vendors and suppliers are solely responsible for verification that documents reproduced herein are accurate and complete.



NOT VALID UNLESS SIGNED
ISSUED FOR:
 BIDDING

JGB
 DRAWN BY
 REL
 CHECKED BY
 REL
 APPROVED BY
 10/27/17
 PROJECT DATE
 1705
 PROJECT NUMBER

SHEET NUMBER:
P.2.0
 Copyright (c) 2017
 All Rights Reserved.