

**GLYNN ACADEMY HIGH SCHOOL  
SIDNEY LANIER BUILDING 5018 MODERNIZATION**

**POST BID ADDENDUM NO. 1**

**DATE: May 30, 2018**

John A. Tuten & Associates, Inc.  
4680 Hwy 17 North  
Brunswick, GA 31525

---

1. Room #115C is revised from Adult Toilet at 115C to Closet 115C. Remove existing plumbing fixtures and repair holes in floor to accept floor finish.
2. Room #118 is revised from Elect. 118 to Office 118.
3. Room #119 is revised from Office 119 to Data 119.
4. Existing Data / Fiber equipment and components in corner of Room #119 is to remain in service – DO NOT DISTURB.
5. Adult Toilet at 119A is revised to Hall 119A. Remove existing plumbing fixtures and repair holes in floor to accept floor finish.
6. Adult Toilet at 119B is revised to Closet 119B. Remove existing plumbing fixtures and repair holes in floor to accept floor finish.
7. Door 119B – Existing frame to remain (Patch and repair / paint as required). Existing door to be removed.
8. Add new Room at 209C (Adult Toilet). New plumbing fixtures, grab bar and electric hand dryer.
9. Add new A.T. ceiling in at 209C. See RCP for ceiling height AFF.
10. Return air grilles for Room 209 HVAC are to be returned through new 6” MTL stud wall above new at 209C ceiling. To be verified with mechanical engineer.
11. It is the intent to keep the existing chair rail in the corridors. Where lockers are removed, provide new chair rail to match existing.

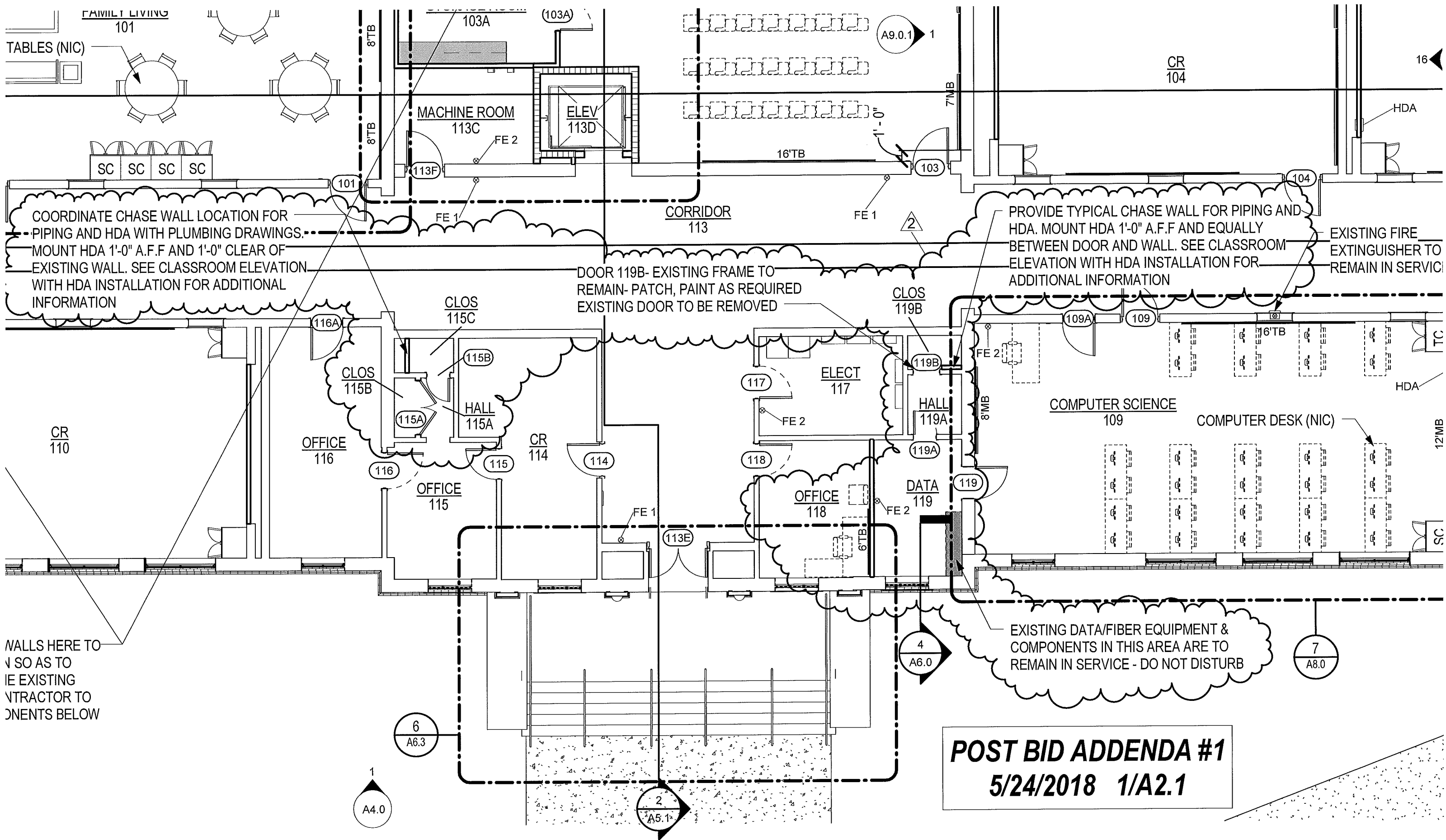
**END OF POST BID ADDENDUM NO. 1**

**Attachments:**

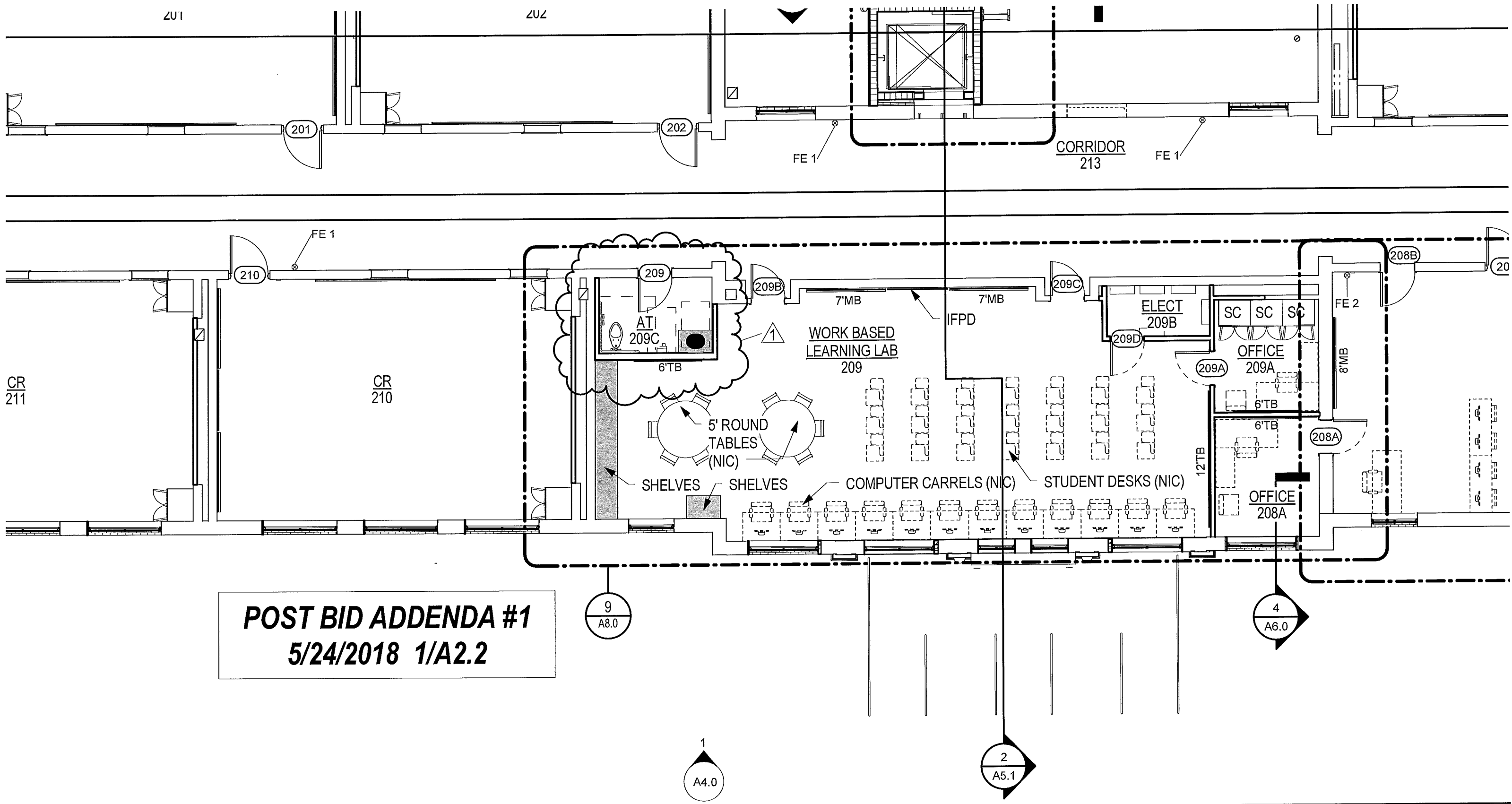
1/A2.1  
1/A2.2  
1/A2.5  
A3.0  
A3.1

**GLYNN ACADEMY HIGH SCHOOL  
SIDNEY LANIER BUILDING 5018 MODERNIZATION**

9/A8.0  
P2.00.1  
P2.01.1  
P2.02.1  
M2.01.1  
M2.02.1  
M2.03.1  
M3.01.1  
M6.01.1  
E2.02.1  
E3.01.1  
E7.01.1  
E7.01.2



**POST BID ADDENDA #1**  
**5/24/2018 1/A2.1**



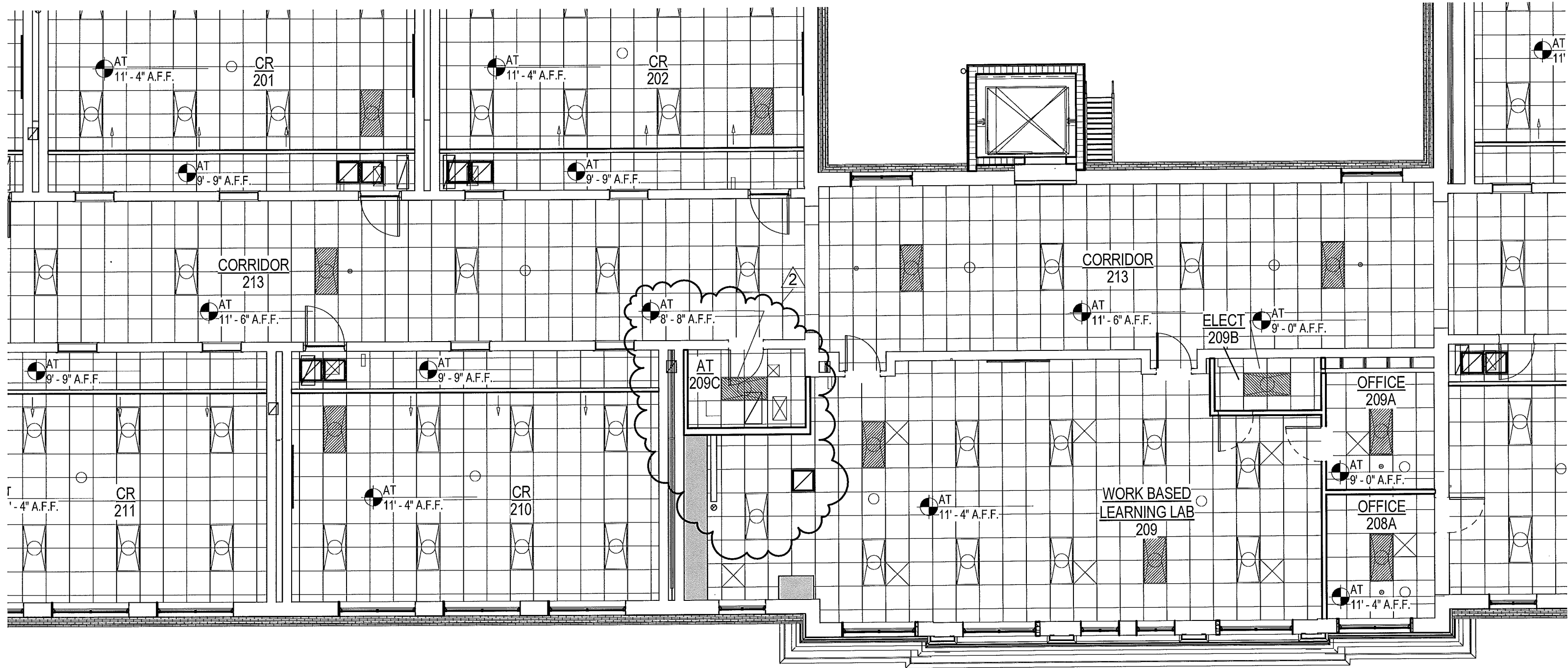
**POST BID ADDENDA #1**  
**5/24/2018 1/A2.2**

GLYNN ACADEMY HIGH SCHOOL  
 SYDNEY LANIER BLDG (5018) MODERNIZATION  
 1001 MANSFIELD STREET

CAPITAL OUTLAY PROJECT # TBD

SYSTEM CODE: 663

WARNING: Contractors, subcontractors, vendor reproduced printed, bound and numbered specifications, addenda, post-bid addenda, and change orders in hard copy or in electronic format, shall not be considered part of the contract documents. The contractor, subcontractor, or vendor shall be responsible for obtaining and reviewing all information utilized in bidding, development of shop drawings, and construction of the project.



**POST BID ADDENDA #1**  
**5/24/2018 1/A2.5**

7 1/2" (FIELD VERIFY)

**POST BID ADDENDA #1  
5/24/2018 A3.0**

3/4" (FIELD VERIFY)

**CLASSROOMS**

WOOD CHAIR RAIL

(FIELD VERIFY)

114	CR		CPT	RUBBER	PNT	AP	
115	OFFICE		CPT	RUBBER	PNT	AP	
115A	HALL		CPT	RUBBER	PNT	AP	
115B	CLOS		CPT	RUBBER	PNT	AP	
115C	CLOS		CT	CT	PNT	AP	INFILL REMOVED PLUMBING FIXTURE LOCATIONS AS REQUIRED TO PROVIDE LEVEL SURFACE PRIOR TO INSTALLATION OF NEW FLOORING SURFACE.
116	OFFICE		CPT	RUBBER	PNT	AP	
117	ELECT		VCT	RUBBER	PNT	AP	
118	OFFICE		CPT	RUBBER	PNT	AP	
119	DATA		VCT	RUBBER	PNT	AP	
119A	HALL		CT	CT	PNT	AP	INFILL REMOVED PLUMBING FIXTURE LOCATIONS AS REQUIRED TO PROVIDE LEVEL SURFACE PRIOR TO INSTALLATION OF NEW FLOORING SURFACE.
119B	CLOS		CT	CT	PNT	AP	INFILL REMOVED PLUMBING FIXTURE LOCATIONS AS REQUIRED TO PROVIDE LEVEL SURFACE PRIOR TO INSTALLATION OF NEW FLOORING SURFACE.
200	CR		CPT	EXISTING WOOD BASE TO REMAIN	PNT	AP	
201	CR		CPT	EXISTING WOOD BASE TO REMAIN	PNT	AP	
202	CR		CPT	EXISTING WOOD BASE TO REMAIN	PNT	AP	
203	CR		CPT	EXISTING WOOD BASE TO REMAIN	PNT	AP	
204	CR		CPT	EXISTING WOOD BASE TO REMAIN	PNT	AP	
205	CR		CPT	EXISTING WOOD BASE TO REMAIN	PNT	AP	
206	AT		CT	CT	CT	AP	WALL TILE TO ABOVE CEILING
206A	CHASE						EXISTING TO REMAIN
206B	CHASE						EXISTING TO REMAIN
207	CR		CPT	EXISTING WOOD BASE TO REMAIN	PNT	AP	
208	COMPUTER SCIENCE		CPT	EXISTING WOOD BASE TO REMAIN	PNT	AP	
208A	OFFICE		CPT	RUBBER	PNT	AP	
209	WORK BASED LEARNING LAB		CPT	EXISTING WOOD BASE TO REMAIN	PNT	AP	
209A	OFFICE		CPT	RUBBER	PNT	AP	
209B	ELECT		VCT	RUBBER	PNT	AP	
209C	AT		CT	CT	PNT/CT	AP	WAINSCOT - 7'-4"
210	CR		CPT	EXISTING WOOD BASE TO REMAIN	PNT	AP	
211	CR		CPT	EXISTING WOOD BASE TO REMAIN	PNT	AP	
212	AT		CT	CT	CT	AP	WALL TILE TO ABOVE CEILING
212A	STOR		CT	CT	PNT	AP	
212B	CHASE						EXISTING TO REMAIN

4

4

4

4

4

4

113C	2		2'-0"	7'-0"	1 3/4"		REPLACE DOOR GLAZING AND TRANSOM GLAZING WITH 1HR RATED GLAZING
113D	2		2'-8"	7'-6"	1 3/4"		EXISTING TO REMAIN
113E	2		2'-8"	7'-6"	1 3/4"		EXISTING TO REMAIN
113F	1		3'-4"	6'-10"	1 3/4"	45 MIN	NEW FIRE RATED HM FRAME- NEW 45 MIN TRANSOM PANEL AND NEW 45 MIN DOOR
114	1	WG1	3'-0"	6'-8"	1 3/4"		FRAME AND TRANSOM TO REMAIN - NEW DOOR TO MATCH DOOR 118
115	1		2'-10"	6'-10"	1 3/4"		EXISTING TO REMAIN
115A	2	WF	2'-6"	7'-0"	1 3/4"	HMA	
115B	1		2'-2"	7'-0"	1 3/4"		EXISTING TO REMAIN
116	1	WG1	3'-4"	7'-0"	1 3/4"	HMA	MATCH TYP. EXISTING CLASSROOM DOOR
116A	1		3'-0"	7'-0"	1 3/4"		EXISTING TO REMAIN
117	1		3'-0"	6'-10"	1 3/4"		EXISTING TO REMAIN
118	1		3'-0"	7'-0"	1 3/4"		EXISTING TO REMAIN
119	1		3'-0"	6'-10"	1 3/4"		EXISTING TO REMAIN
119A	1		2'-2"	7'-0"	1 3/4"		EXISTING TO REMAIN
119B	1		2'-6"	7'-0"	1 3/4"		EXISTING FRAME TO REMAIN, DOOR TO BE REMOVED
200	1		3'-4"	7'-0"	1 3/4"		EXISTING TO REMAIN
201	1		3'-4"	7'-0"	1 3/4"		EXISTING TO REMAIN
202	1		3'-4"	7'-0"	1 3/4"		EXISTING TO REMAIN
203	1		3'-4"	7'-0"	1 3/4"		EXISTING TO REMAIN
204	1		3'-4"	7'-0"	1 3/4"		EXISTING TO REMAIN
205	1		3'-4"	7'-0"	1 3/4"		EXISTING TO REMAIN
206	1		3'-0"	7'-0"	1 3/4"		EXISTING TO REMAIN
206A	1	FF	1'-8"	7'-0"	1 3/4"	FFA	NEW FIBERGLASS REPLACEMENT DOOR AND FRAME
206B	1	FF	1'-8"	7'-0"	1 3/4"	FFA	NEW FIBERGLASS REPLACEMENT DOOR AND FRAME
207	1		3'-4"	7'-0"	1 3/4"		EXISTING TO REMAIN
208	1		3'-4"	7'-0"	1 3/4"		EXISTING TO REMAIN
208A	1	WG1	3'-0"	7'-0"	1 3/4"	HMA	
208B	1	WF	3'-0"	7'-0"	1 3/4"	HMA	EXISTING TO REMAIN
209	1	WG1	3'-0"	7'-0"	1 3/4"	HMA	EXISTING DOOR TO REMAIN, REPLACE GLAZING WITH OPAQUE
209A	1	WG1	3'-0"	7'-0"	1 3/4"	HMA	MATCH TYP. EXISTING CLASSROOM DOOR
209B	1		3'-0"	7'-0"	1 3/4"		EXISTING TO REMAIN
209C	1		3'-0"	7'-0"	1 3/4"		EXISTING TO REMAIN
209D	1	WF	3'-0"	7'-0"	1 3/4"	HMA	
210	1		3'-4"	7'-0"	1 3/4"		EXISTING TO REMAIN
211	1		3'-4"	7'-0"	1 3/4"		EXISTING TO REMAIN
212	1		3'-0"	7'-0"	1 3/4"		EXISTING TO REMAIN
212A	1	FF	2'-8"	6'-8"	1 3/4"	FFA	45 MIN NEW FIBERGLASS REPLACEMENT DOOR AND FRAME
212B	1	FF	1'-8"	7'-0"	1 3/4"	FFA	NEW FIBERGLASS REPLACEMENT DOOR AND FRAME
213	2		2'-6"	7'-0"	1 3/4"		REPLACE DOOR GLAZING AND TRANSOM GLAZING WITH 1HR RATED GLAZING
213A	2		2'-6"	7'-0"	1 3/4"		REPLACE DOOR GLAZING AND TRANSOM GLAZING WITH 1HR RATED GLAZING

**POST BID ADDENDA #1**  
**5/24/2018 A3.1**

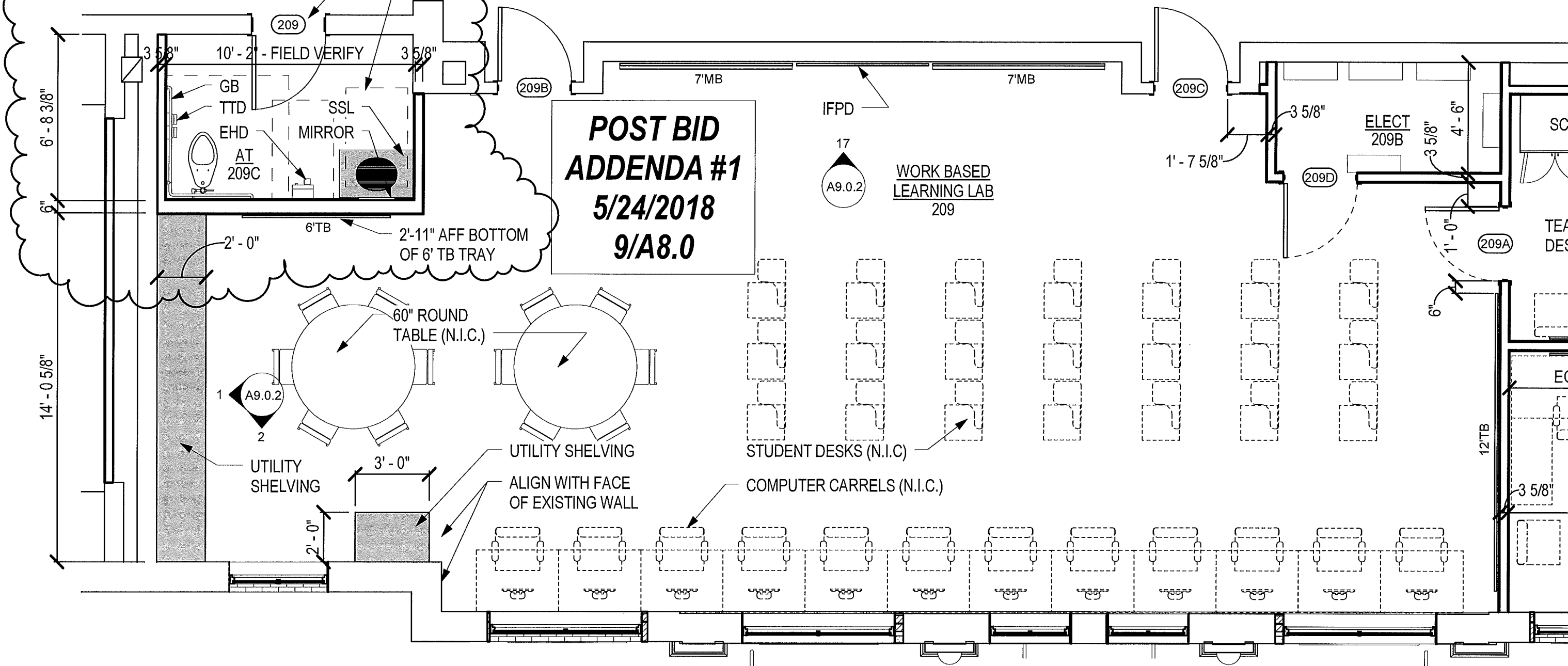
4

SEE TOILET ROOM DETAILS FOR MOUNTING HEIGHTS AND ADDITIONAL INFORMATION

DOOR #209- EXISTING DOOR TO REMAIN, REPLACE GLAZING WITH OPAQUE

# 7 TYPICAL COMPUTER SCIENCE

A8.0 SCALE: 1/4" = 1'-0"



# 9 WORK BASED LEARNING LAB - LEVEL 2

A8.0 SCALE: 1/4" = 1'-0"





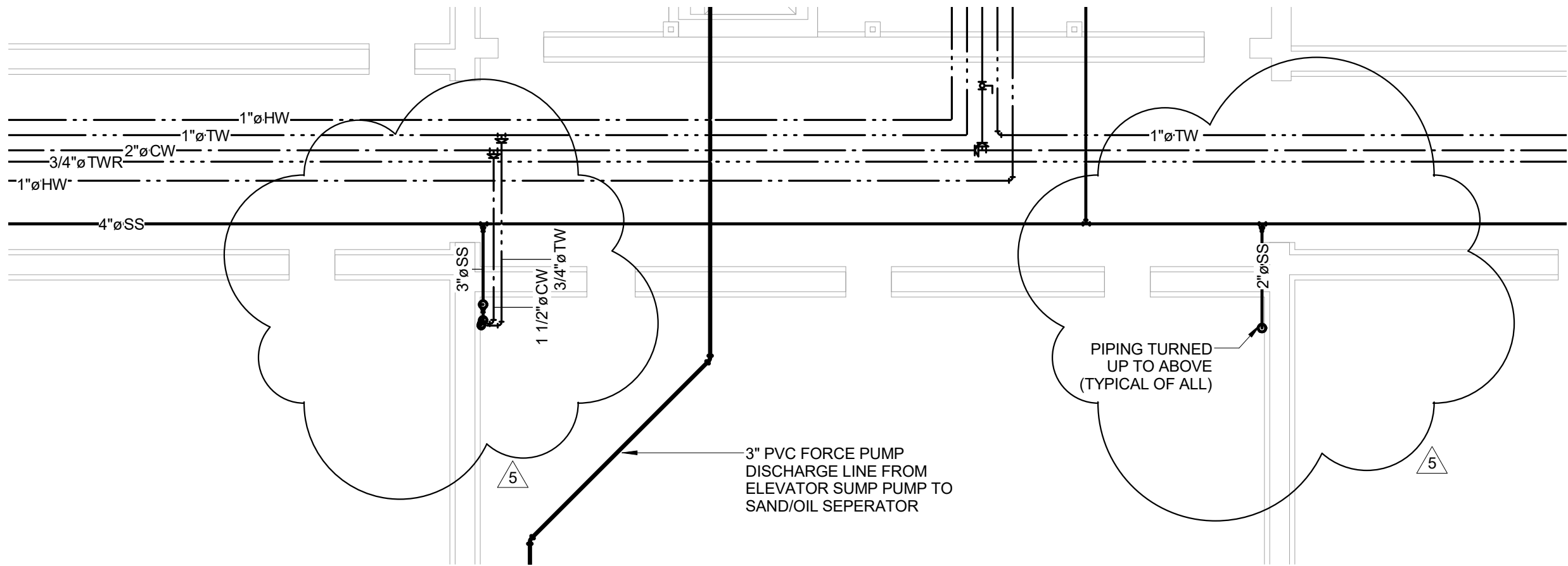
**DON PENN CONSULTING ENGINEER**  
 1301 SOLANA BLVD.  
 BLDG. 1 | SUITE 1420  
 WESTLAKE, TX 76262  
 O: 817.410.2858 | F: 817.251.8411



Post Bid Addendum #1

DRAWN BY	MP	SHEET NUMBER	
CHECKED BY	DJP		
PROJECT NUMBER	1702		
			2018-05-24

**P2.00.1**



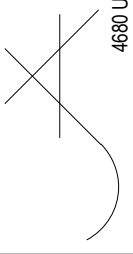
1

**PARTIAL PLUMBING PLAN - CRAWLSPACE**

SCALE: 1/8" = 1'-0"

GLYNN ACADEMY HIGH SCHOOL SYDNEY LANIER BLDG (5018)  
 MODERNIZATION

JOHN A. TUTEN & ASSOCIATES -- ARCHITECTS  
 4680 US HIGHWAY 17 NORTH BRUNSWICK GEORGIA 31525





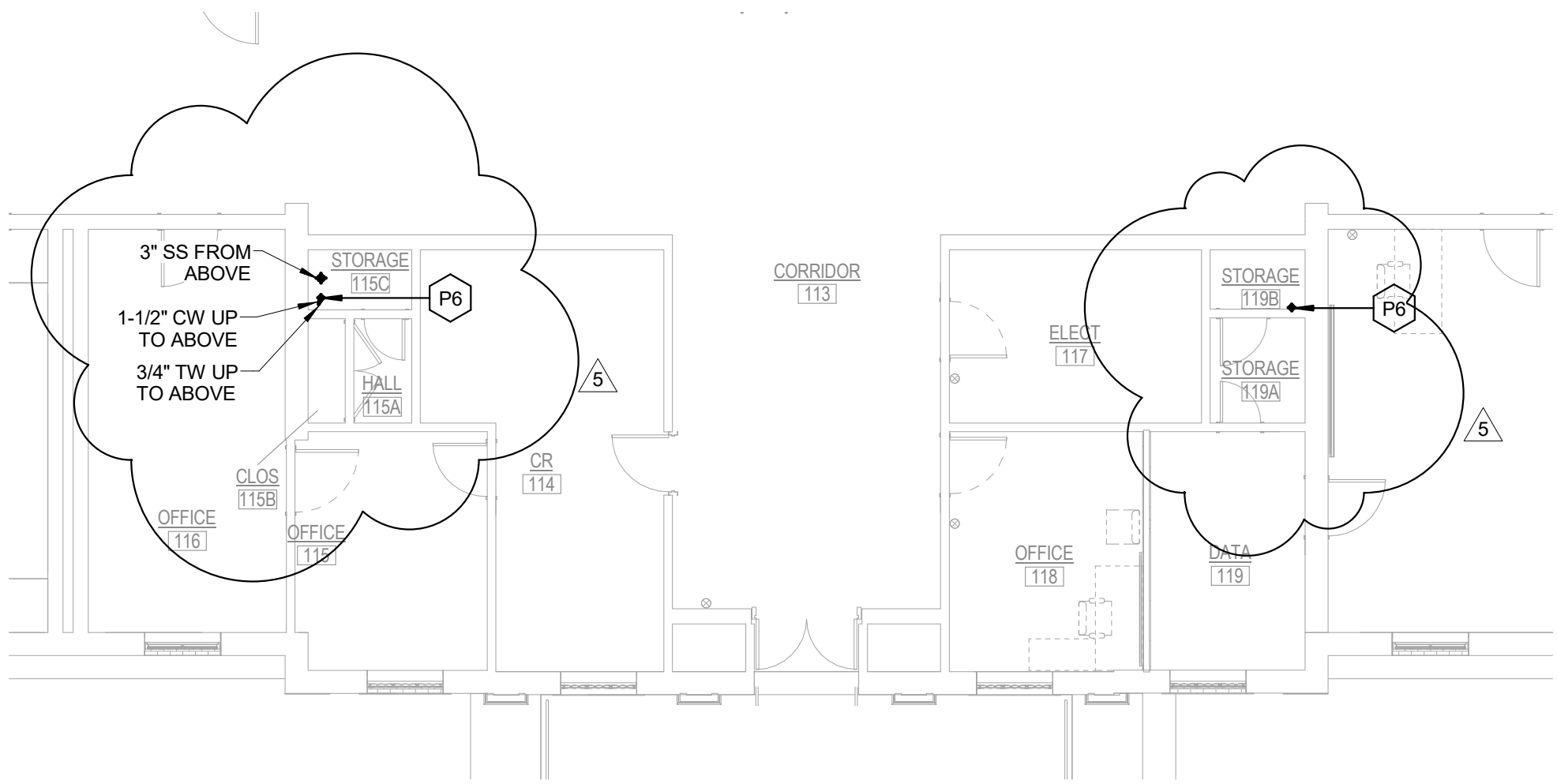
**DON PENN CONSULTING ENGINEER**  
 1301 SOLANA BLVD.  
 BLDG. 1 | SUITE 1420  
 WESTLAKE, TX 76262  
 O: 817.410.2858 | F: 817.251.8411



Post Bid Addendum #1

DRAWN BY	MP	SHEET NUMBER	
CHECKED BY	DJP		
PROJECT NUMBER	1702		
			2018-05-24

**P2.01.1**



**1 PARTIAL PLUMBING PLAN - LEVEL 1**  
 SCALE: 1/8" = 1'-0"

GLYNN ACADEMY HIGH SCHOOL SYDNEY LANIER BLDG (5018)  
 MODERNIZATION

JOHN A. TUTEN & ASSOCIATES -- ARCHITECTS  
 4680 US HIGHWAY 17 NORTH BRUNSWICK GEORGIA 31525

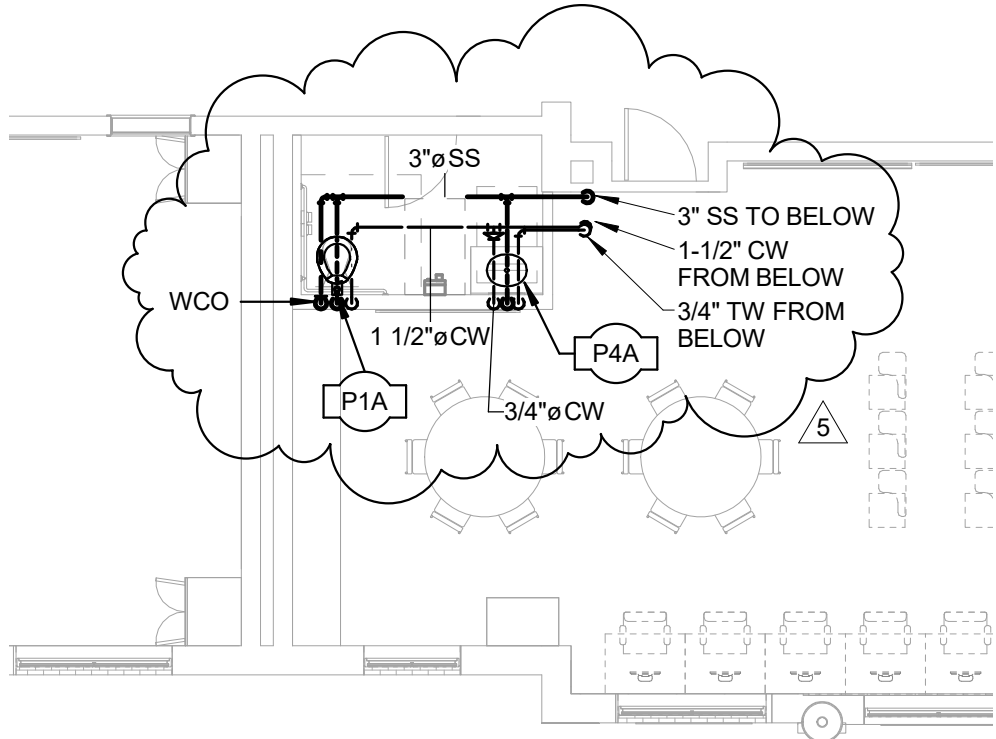


**DON PENN CONSULTING ENGINEER**  
 1301 SOLANA BLVD.  
 BLDG. 1 | SUITE 1420  
 WESTLAKE, TX 76262  
 O: 817.410.2858 | F: 817.251.8411



Post Bid Addendum #1

DRAWN BY	MP	SHEET NUMBER
CHECKED BY	DJP	<b>P2.02.1</b>
PROJECT NUMBER	1702	
		2018-05-24



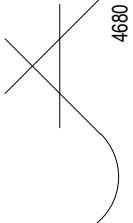
1

**PARTIAL PLUMBING PLAN - LEVEL 2**

SCALE: 1/8" = 1'-0"

GLYNN ACADEMY HIGH SCHOOL SYDNEY LANIER BLDG (5018)  
 MODERNIZATION

JOHN A. TUTEN & ASSOCIATES -- ARCHITECTS  
 4680 US HIGHWAY 17 NORTH BRUNSWICK GEORGIA 31525





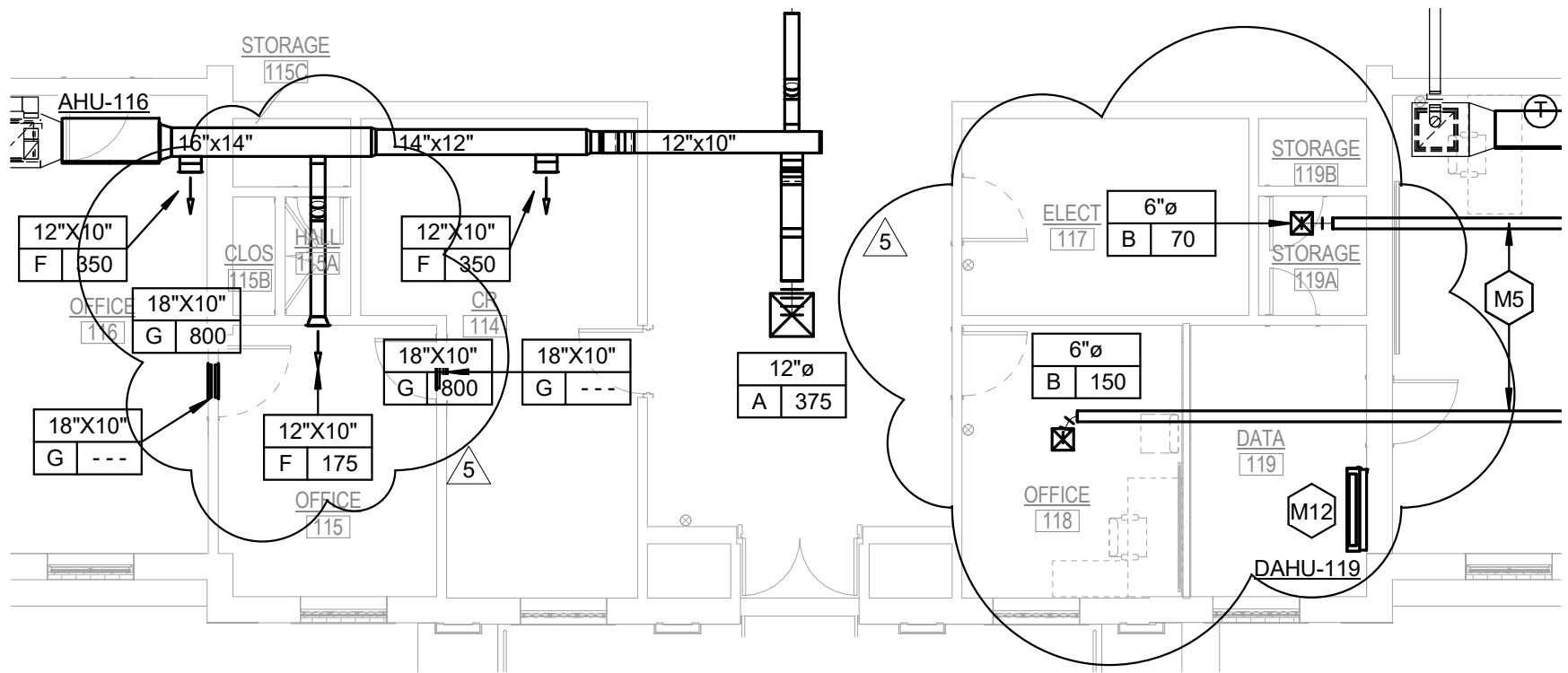
**DON PENN CONSULTING ENGINEER**  
 1301 SOLANA BLVD.  
 BLDG. 1 | SUITE 1420  
 WESTLAKE, TX 76262  
 O: 817.410.2858 | F: 817.251.8411



Post Bid Addendum #1

DRAWN BY	MP	SHEET NUMBER	
CHECKED BY	DJP		
PROJECT NUMBER	1702		
			2018-05-24

**M2.01.1**



1

**PARTIAL MECHANICAL PLAN - LEVEL 1**

SCALE: 1/8" = 1'-0"

GLYNN ACADEMY HIGH SCHOOL SYDNEY LANIER BLDG (5018)  
 MODERNIZATION

JOHN A. TUTEN & ASSOCIATES -- ARCHITECTS  
 4680 US HIGHWAY 17 NORTH BRUNSWICK GEORGIA 31525



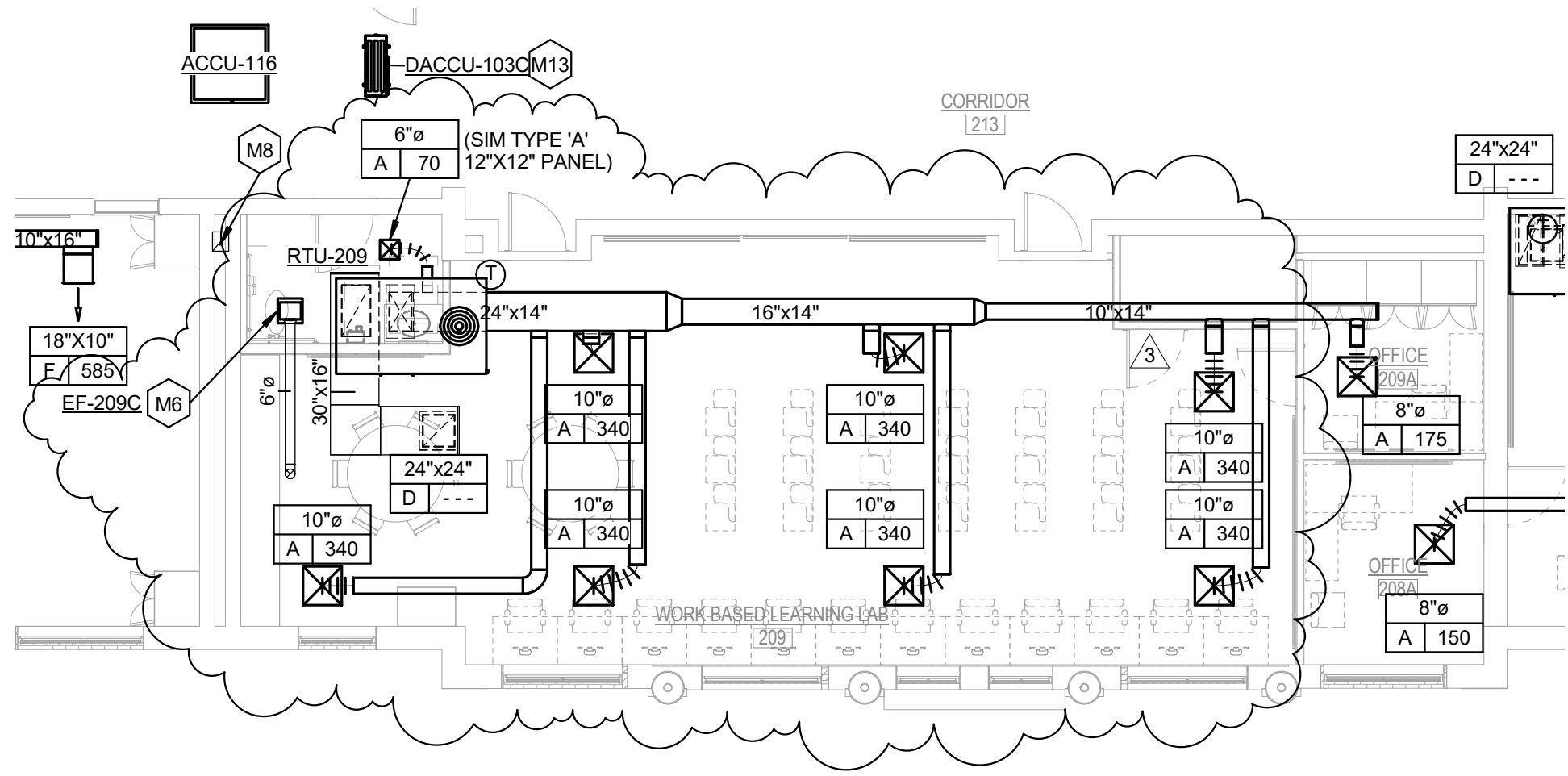
**DON PENN CONSULTING ENGINEER**  
 1301 SOLANA BLVD.  
 BLDG. 1 | SUITE 1420  
 WESTLAKE, TX 76262  
 O: 817.410.2858 | F: 817.251.8411



Post Bid Addendum #1

DRAWN BY	MP	SHEET NUMBER	
CHECKED BY	DJP		
PROJECT NUMBER	1702		
			2018-05-24

**M2.02.1**



**1 PARTIAL MECHANICAL PLAN - LEVEL 2**  
 SCALE: 1/8" = 1'-0"

GLYNN ACADEMY HIGH SCHOOL SYDNEY LANIER BLDG (5018)  
 MODERNIZATION

JOHN A. TUTEN & ASSOCIATES -- ARCHITECTS  
 4680 US HIGHWAY 17 NORTH BRUNSWICK GEORGIA 31525



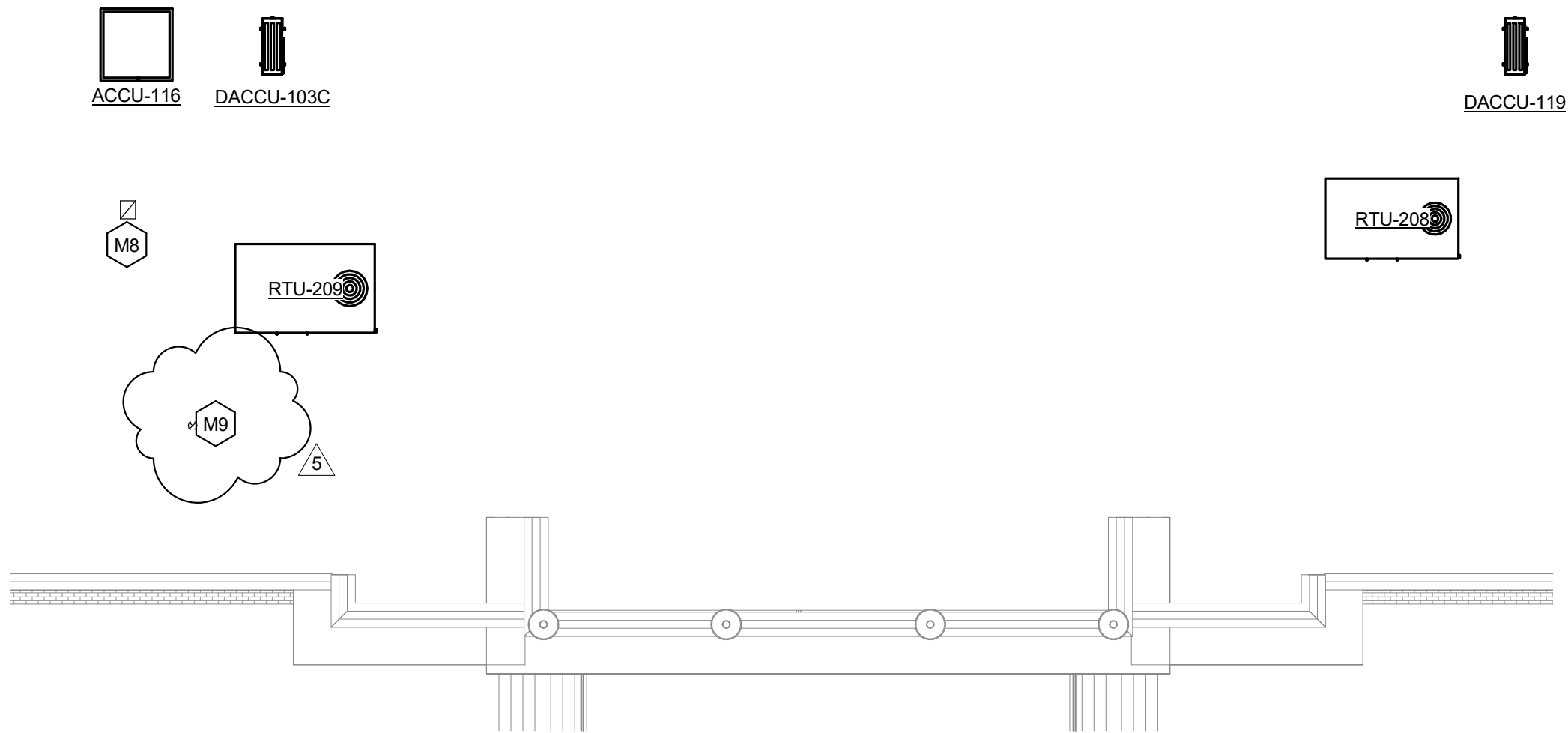
**DON PENN CONSULTING ENGINEER**  
 1301 SOLANA BLVD.  
 BLDG. 1 | SUITE 1420  
 WESTLAKE, TX 76262  
 O: 817.410.2858 | F: 817.251.8411



Post Bid Addendum #1

DRAWN BY	MP	SHEET NUMBER	
CHECKED BY	DJP		
PROJECT NUMBER	1702		
			2018-05-24

**M2.03.1**



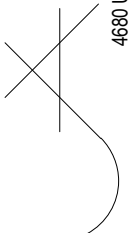
1

**PARTIAL MECHANICAL PLAN - ROOF**

SCALE: 1/8" = 1'-0"

GLYNN ACADEMY HIGH SCHOOL SYDNEY LANIER BLDG (5018)  
 MODERNIZATION

JOHN A. TUTEN & ASSOCIATES -- ARCHITECTS  
 4680 US HIGHWAY 17 NORTH BRUNSWICK GEORGIA 31525





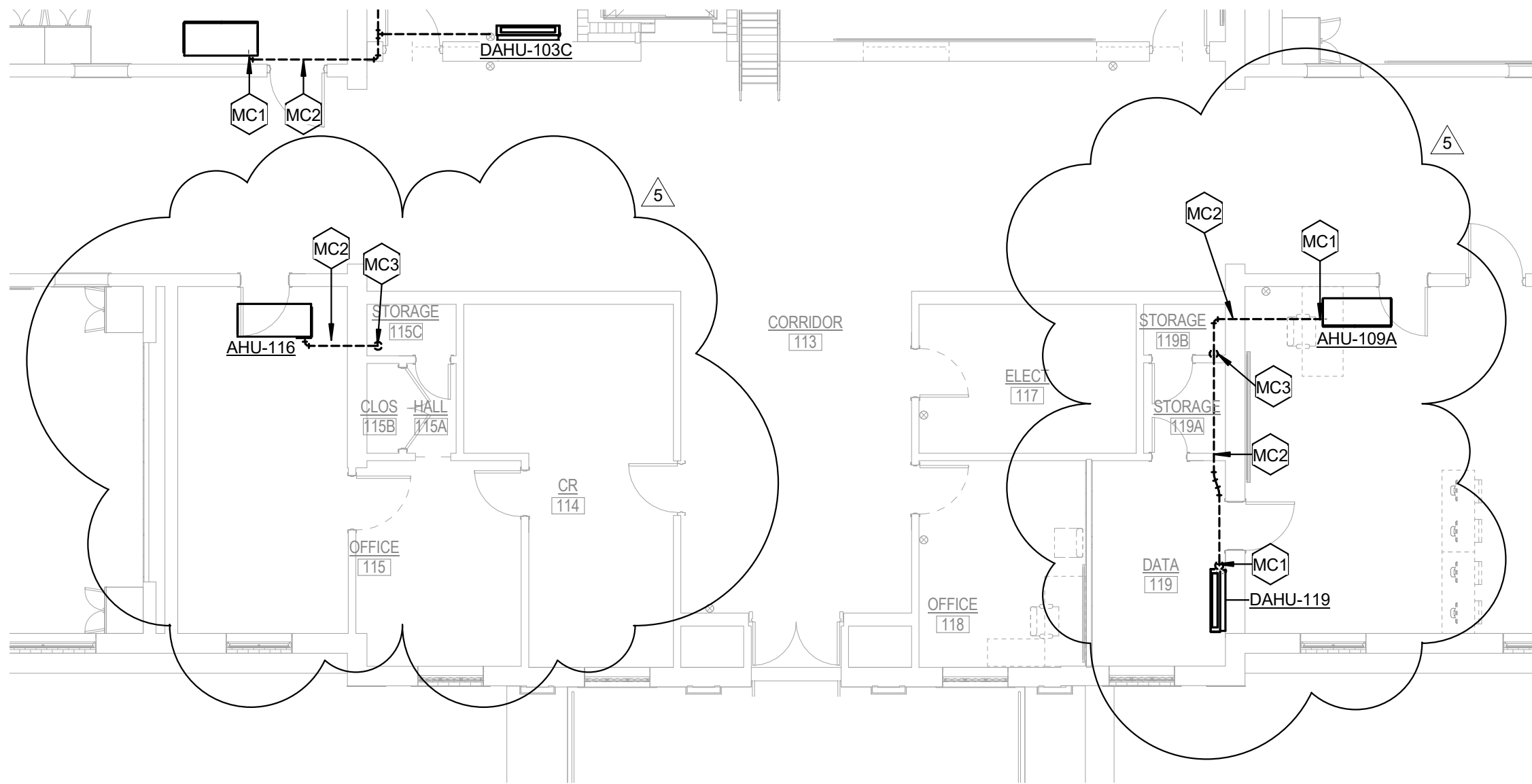
**DON PENN CONSULTING ENGINEER**  
 1301 SOLANA BLVD.  
 BLDG. 1 | SUITE 1420  
 WESTLAKE, TX 76262  
 O: 817.410.2858 | F: 817.251.8411



Post Bid Addendum #1

DRAWN BY	MP	SHEET NUMBER	
CHECKED BY	DJP		
PROJECT NUMBER	1702		
			2018-05-24

**M3.01.1**



1

**PARTIAL MECHANICAL CONDENSATE PLAN - LEVEL 1**

SCALE: 1/8" = 1'-0"

GLYNN ACADEMY HIGH SCHOOL SYDNEY LANIER BLDG (5018)  
 MODERNIZATION

JOHN A. TUTEN & ASSOCIATES -- ARCHITECTS  
 4680 US HIGHWAY 17 NORTH BRUNSWICK GEORGIA 31525



**DON PENN CONSULTING ENGINEER**  
 1301 SOLANA BLVD.  
 BLDG. 1 | SUITE 1420  
 WESTLAKE, TX 76262  
 O: 817.410.2858 | F: 817.251.8411



SHEET NUMBER

**M6.01.1**

DRAWN BY MP

CHECKED BY DJP

PROJECT NUMBER 1702

2018-05-24

## EXHAUST FAN SCHEDULE

Mark	Manufacturer	Model	CFM	Static Pressure	Electrical Load	HP	Voltage	Phase	Sones	Fan Type	Drive	Mounting	Unit Weight	Comments
EF-101B	GREENHECK	SP-A250	175	0.500	85	N/A	120 V	1	2.5	CENTRIF	DIRECT	CEILING	24	1,2,3,4,C
EF-101C	GREENHECK	SP-A200	165	0.250	50	N/A	120 V	1	1.4	CENTRIF	DIRECT	CEILING	24	1,2,3,4,C
EF-102C	GREENHECK	SP-A110	85	0.250	50	N/A	120 V	1	1.5	CENTRIF	DIRECT	CEILING	17	1,2,3,4,C
EF-102D	GREENHECK	SP-A110	85	0.250	50	N/A	120 V	1	1.5	CENTRIF	DIRECT	CEILING	17	1,2,3,4,C
EF-102F	VENT-A-KILN	CSP-A780	500	0.250	432	N/A	120 V	1	3.0	INLINE	DIRECT	CEILING	36	1,2,3,4,E
EF-103A	GREENHECK	SP-A290	225	0.250	80	N/A	120 V	1	2.5	CENTRIF	DIRECT	CEILING	24	1,2,3,4,C
EF-107	GREENHECK	G-101	680	0.500	700	1/4	120 V	1	8.9	CENTRIF	DIRECT	ROOF	43	1,2,3,5,A
EF-112B	GREENHECK	G-101	510	0.500	700	1/4	120 V	1	8.9	CENTRIF	DIRECT	ROOF	43	1,2,3,5,A
EF-206	GREENHECK	G-101	510	0.500	700	1/4	120 V	1	8.9	CENTRIF	DIRECT	ROOF	43	1,2,3,5,A
EF-209C	GREENHECK	SP-A110	85	0.250	50	N/A	120 V	1	1	CENTRIF	DIRECT	CEILING	17	1,2,3,4,C
EF-212	GREENHECK	G-101	510	0.500	700	1/4	120 V	1	8.9	CENTRIF	DIRECT	ROOF	43	1,2,3,5,A

### EXHAUST FAN SCHEDULE NOTES

- \*\* TSP (TOTAL STATIC PRESSURE) INCLUDES DUCTWORK, DAMPERS, AND REGISTER.
- \*\*\* PROVIDE VARI-GREEN MOTORS FOR ALL DIRECT DRIVE FANS.
- 1 PROVIDE GRAVITY BACKDRAFT DAMPER WITH NYLON BEARINGS, FELTED SEALING UP, AND INSECT SCREEN STANDARD MODEL AS RECOMMENDED BY MANUFACTURER.
- 2 REFER TO POWER DWGS. FOR POWER DATA.
- 3 ALL ALUMINUM CONSTRUCTION.
- 4 CEILING MOUNTED FAN. DO NOT SUPPORT FROM CEILING TILE.
- 5 INSTALL UNIT ON MANUFACTURERS ROOF CURB.
- 6 PROVIDE WITH MOTOR COVER, INLET AND OUTLET GUARD.
- 7 PROVIDE EPOXY COATING
- 8 INTERLOCK WITH ASSOCIATED MAKE UP AIR SYSTEM BLOWER.
- 9 PROVIDE COMPANION FAN TO KITCHEN HOOD, MANUFACTURED BY KITCHEN HOOD MANUFACTURER AS TO MAINTAIN UL RATING OF HOOD ASSEMBLY.
- A INTERLOCK WITH OWNERS ENERGY MANAGEMENT SYSTEM.
- B CONTROL VIA WALL MOUNTED T-STAT.
- C SWITCH EXHAUST FAN WITH LOCAL AREA LIGHT SWITCH OR OCCUPANCY SENSOR. REFER TO LIGHT SWITCHING DETAIL FOR MORE INFORMATION.
- D PROVIDE 1-HOUR MARK TIME SWITCH. VERIFY LOCATION WITH ARCHITECT/OWNER PRIOR TO INSTALLATION.
- E PROVIDE PILOT LIGHT SWITCH FOR FAN CONTROL. COORDINATE EXACT LOCATION OF KILN PRIOR TO INSTALLATION.
- F PROVIDE DOOR SWITCH FOR AUTO ON/OFF.
- G INTERLOCK WITH DISHWASHER TANK HEATER AND BOOSTER HEATER TO OPERATE WHEN EITHER PIECE OF EQUIPMENT IS IN OPERATION.
- H PROVIDE NEC NON-FUSED DISCONNECT FOR EACH FAN.

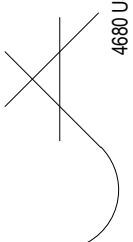
SYDNEY LANIER BLDG (5018)

MODERNIZATION

GLYNN ACADEMY HIGH SCHOOL

JOHN A. TUTEN & ASSOCIATES -- ARCHITECTS

4680 US HIGHWAY 17 NORTH BRUNSWICK GEORGIA 31525







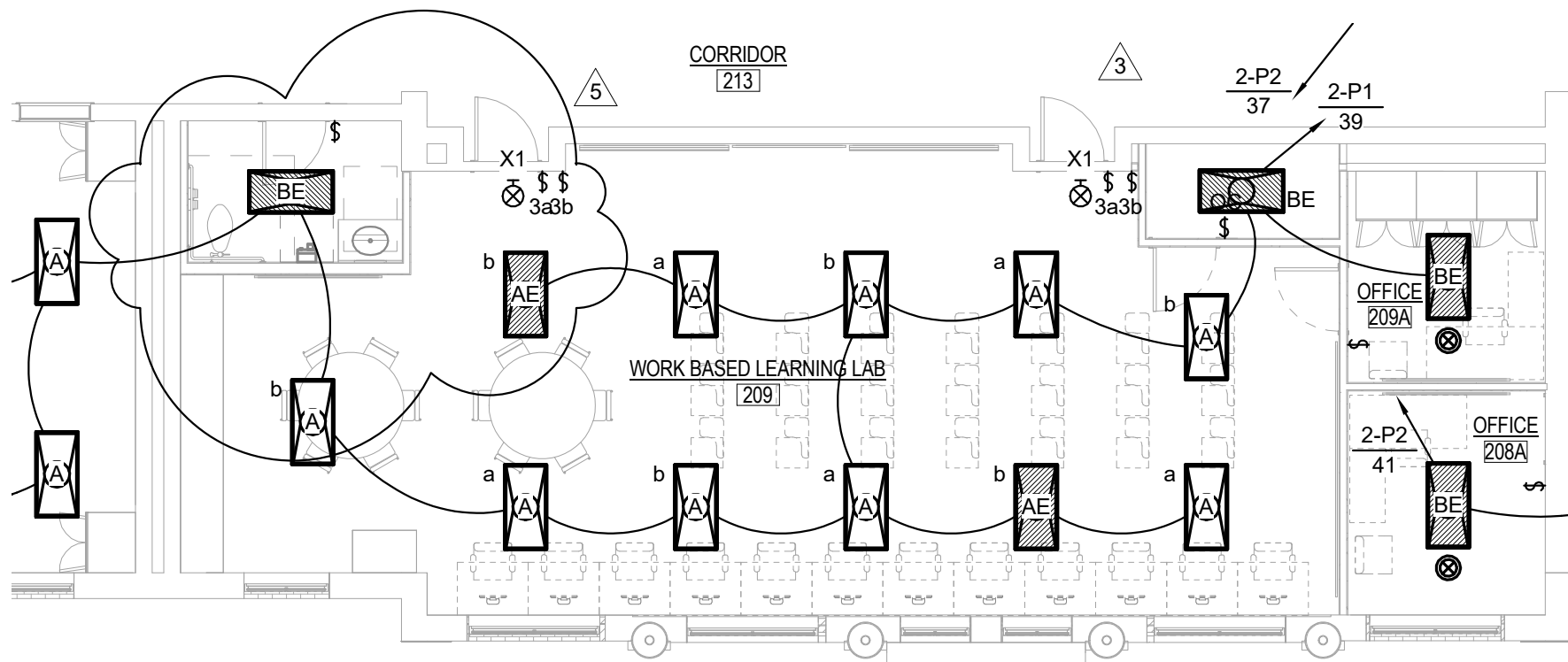
**DON PENN CONSULTING ENGINEER**  
 1301 SOLANA BLVD.  
 BLDG. 1 | SUITE 1420  
 WESTLAKE, TX 76262  
 O: 817.410.2858 | F: 817.251.8411



Post Bid Addendum #1

DRAWN BY	MP	SHEET NUMBER	
CHECKED BY	DJP		
PROJECT NUMBER	1702		
			2018-05-24

**E2.02.1**



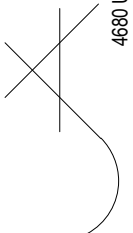
1

**PARTIAL LIGHTING PLAN - LEVEL 2**

SCALE: 1/8" = 1'-0"

GLYNN ACADEMY HIGH SCHOOL SYDNEY LANIER BLDG (5018)  
 MODERNIZATION

JOHN A. TUTEN & ASSOCIATES -- ARCHITECTS  
 4680 US HIGHWAY 17 NORTH BRUNSWICK GEORGIA 31525





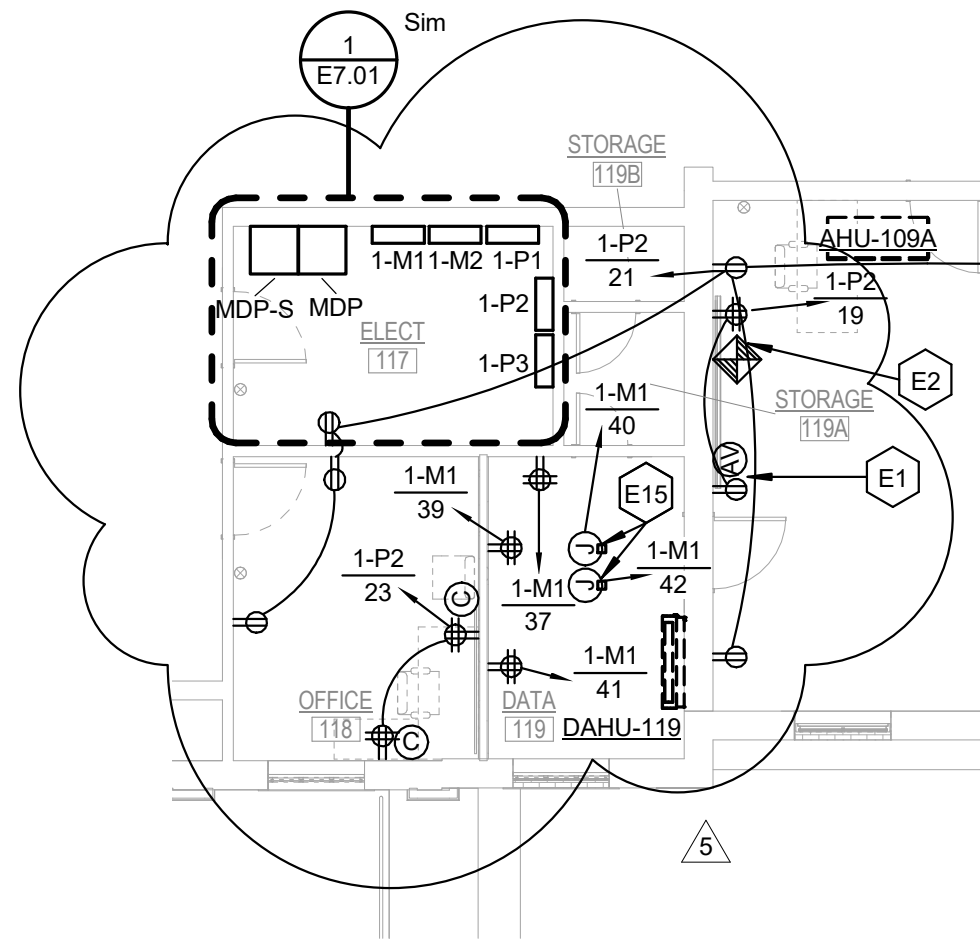
**DON PENN CONSULTING ENGINEER**  
 1301 SOLANA BLVD.  
 BLDG. 1 | SUITE 1420  
 WESTLAKE, TX 76262  
 O: 817.410.2858 | F: 817.251.8411



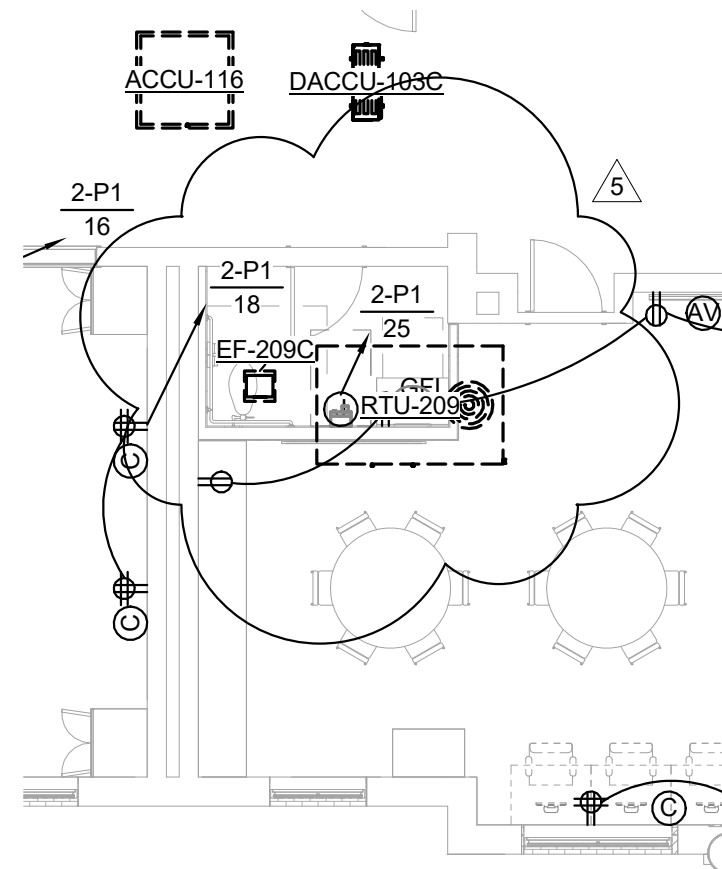
Post Bid Addendum #1

DRAWN BY	MP	SHEET NUMBER	
CHECKED BY	DJP		
PROJECT NUMBER	1702		
			2018-05-24

**E3.01.1**



**1 PARTIAL POWER PLAN - LEVEL 1**  
 SCALE: 1/8" = 1'-0"



**2 PARTIAL POWER PLAN - LEVEL 2**  
 SCALE: 1/8" = 1'-0"

GLYNN ACADEMY HIGH SCHOOL SYDNEY LANIER BLDG (5018)  
 MODERNIZATION

JOHN A. TUTEN & ASSOCIATES -- ARCHITECTS  
 4680 US HIGHWAY 17 NORTH BRUNSWICK GEORGIA 31525



**DON PENN CONSULTING ENGINEER**  
 1301 SOLANA BLVD.  
 BLDG. 1 | SUITE 1420  
 WESTLAKE, TX 76262  
 O: 817.410.2858 | F: 817.251.8411



SHEET NUMBER

**E7.01.1**

MP

DRAWN BY

DJP

CHECKED BY

1702

PROJECT NUMBER

2018-05-24

GLYNN ACADEMY HIGH SCHOOL SYDNEY LANIER BLDG (5018)

MODERNIZATION

JOHN A. TUTEN & ASSOCIATES -- ARCHITECTS

4680 US HIGHWAY 17 NORTH BRUNSWICK GEORGIA 31525

<b>Panel: 1-P2</b>															<b>PROVIDE 200% NEUTRAL</b>		
Location: ELECT 117					Volts: 120/208 Wye					A.I.C. Rating: 22,000							
Supply From: MDP					Phase... 3					Mains Rating: 150 A							
Mounting: Surface					Wires: 4					Mains Type: MLO							
NO...	C...	CIRCUIT DESCRIPTION	WIRE	BRKR	#	A	B	C	A	B	C	#	BRKR	WIRE	CIRCUIT DESCRIPTION	C...	NO...
1		RECEPTS 104	12	20	1	1080			1200			1	20	12	HAND DRYER	2	4
3		COMP RECEPTS 104	12	20	1		720			1200		1	20	12	HAND DRYER	4	4
5		TWS 104	12	20	1			760			800	1	20	12	EWC	6	1,4
7		RECEPTS 105	12	20	1	1260			720			1	20	12	RECEPTS 107, 113	8	
9		COMP RECEPTS 105	12	20	1		720			1080		1	20	12	RECEPTS 108	10	
11		TWS 105	12	20	1			760			720	1	20	12	COMP RECEPTS 108	12	
13		RECEPTS 106	12	20	1	1080			760			1	20	12	TWS 108	14	
15		COMP RECEPTS 106	12	20	1		720			800		1	20	12	COMP RECEPTS 109	16	
17		TWS 106	12	20	1			760			800	1	20	12	COMP RECEPTS 109	18	
19		TWS 109	12	20	1	760			800			1	20	12	COMP RECEPTS 109	20	
21		RECEPTS 109, 118, 119, 120	12	20	1		1260			800		1	20	12	COMP RECEPTS 109	22	
23		COMP RECPTS 120	12	20	1			720			800	1	20	12	COMP RECEPTS 109	24	
25		BASEMENT RECEPTS	12	20	1	360			800			1	20	12	COMP RECEPTS 109	26	
27		LIGHTS BASEMENT	12	20	1		880			800		1	20	12	COMP RECEPTS 109	28	
4	29	WASHER 103A	12	20	1			1200			800	1	20	12	COMP RECEPTS 109	30	
31		LIGHTS 108, 109, 120	12	20	1	856			800			1	20	12	COMP RECEPTS 109	32	
33		LIGHTS 104, 105, 106	12	20	1		1032			0		1	20	--	SPARE	34	
35		SPARE	--	20	1			0			0	1	20	--	SPARE	36	
37		SPARE	--	20	1	0			0			1	20	--	SPARE	38	
39		SPARE	--	20	1		0			0		1	20	--	SPARE	40	
41		SPARE	--	20	1			0			0	1	20	--	SPARE	42	
<b>Total Load:</b>						10476 W		10012 W		8120 W							
<b>Total Amps:</b>						90 A		86 A		68 A							
<b>NOTES:</b>															<b>PANEL TOTALS</b>		
1. Provide GFCI Breaker															<b>Total Conn. Load:</b> 28613 VA		
2. Circuit Via Energy Management System															<b>Total Est. Demand:</b> 24086 VA		
3. Circuit Via Photo Cell Operation / DDC Controller															<b>Total Conn.:</b> 79 A		
4. Provide Breaker and Fuses Per Manufacturers Recommendation															<b>Total Est. Demand:</b> 67 A		
5. Provide H.A.C.R. Breaker																	
6. Provide a Lock on Breaker																	



**DON PENN CONSULTING ENGINEER**  
 1301 SOLANA BLVD.  
 BLDG. 1 | SUITE 1420  
 WESTLAKE, TX 76262  
 O: 817.410.2858 | F: 817.251.8411



SHEET NUMBER

**E7.01.2**

DRAWN BY Author

CHECKED BY Checker

PROJECT NUMBER 1702

2018-05-24

## Panel: 2-P1

**PROVIDE 200% NEUTRAL**

Location: ELECT 209B  
 Supply From: 2-M1  
 Mounting: Surface

Volts: 120/208 Wye  
 Phase... 3  
 Wires: 4

A.I.C. Rating: 22,000  
 Mains Rating: 150 A  
 Mains Type: MLO

NO...	C...	CIRCUIT DESCRIPTION	WIRE	BRKR	#	A	B	C	A	B	C	#	BRKR	WIRE	CIRCUIT DESCRIPTION	C...	NO...
1		RECEPTS 200	12	20	1	1080			1200			1	20	12	HAND DRYER	2	4
3		COMP RECEPTS 200	12	20	1		720			1200		1	20	12	HAND DRYER	4	4
5		TWS 200	12	20	1			760			800	1	20	12	EWC	6	4
7		RECEPTS 201	12	20	1	1260			720			1	20	12	RECEPTS 212, 213	8	
9		COMP RECEPTS 201	12	20	1		720			1080		1	20	12	RECEPTS 211	10	
11		TWS 201	12	20	1			760			720	1	20	12	COMP RECEPTS 211	12	
13		RECEPTS 202	12	20	1	1080			760			1	20	12	TWS 211	14	
15		COMP RECEPTS 202	12	20	1		720			1080		1	20	12	RECEPTS 210	16	
17		TWS 202	12	20	1			760			720	1	20	12	COMP RECEPTS 210	18	
4	19	EXHAUST FAN 112	12	20	1	700			760			1	20	12	TWS 210	20	
4	21	EXHAUST FAN 212	12	20	1		700			1080		1	20	12	RECEPTS 209	22	
4	23	EXHAUST FAN 209C	12	20	1			50			1080	1	20	12	COMP RECEPTS 209	24	
4	25	HAND DRYER	12	20	1	1200			1080			1	20	12	COMP RECEPTS 209	26	
27		SPARE	--	20	1		0			760		1	20	12	TWS 209	28	
29		SPARE	--	20	1			0			0	1	20	--	SPARE	30	
31		SPARE	--	20	1	0			0			1	20	--	SPARE	32	
33		SPARE	--	20	1		0			0		1	20	--	SPARE	34	
35		SPARE	--	20	1			0			0	1	20	--	SPARE	36	
37		SPARE	--	20	1	0			0			1	20	--	SPARE	38	
39		LIGHTS 209, 210, 211	12	20	1		1269			0		1	20	--	SPARE	40	
41		LIGHTS 200, 201, 202	12	20	1			1032			0	1	20	--	SPARE	42	

**Total Load:** 9840 W    9329 W    6682 W  
**Total Amps:** 85 A    81 A    56 A

**NOTES:**

1. Provide GFCI Breaker
2. Circuit Via Energy Management System
3. Circuit Via Photo Cell Operation / DDC Controller
4. Provide Breaker and Fuses Per Manufacturers Recommendation
5. Provide H.A.C.R. Breaker
6. Provide a Lock on Breaker

**PANEL TOTALS**

**Total Conn. Load:** 25851 VA  
**Total Est. Demand:** 23076 VA  
**Total Conn.:** 72 A  
**Total Est. Demand:** 64 A

GLYNN ACADEMY HIGH SCHOOL SYDNEY LANIER BLDG (5018)  
 MODERNIZATION

JOHN A. TUTEN & ASSOCIATES -- ARCHITECTS  
 4680 US HIGHWAY 17 NORTH BRUNSWICK GEORGIA 31525